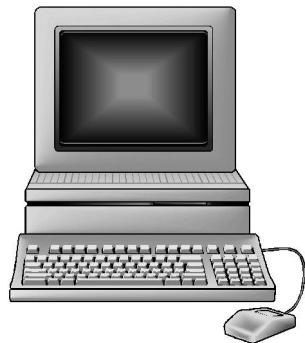


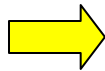


***“If It’s Anagon, It’s Automatic!”***

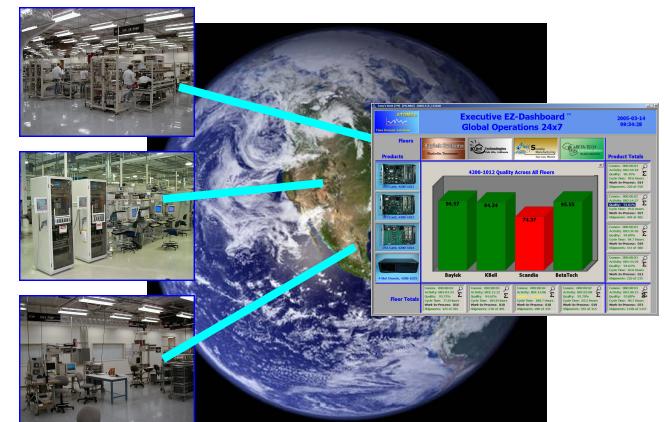
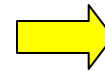
# ***World Class Automatic Manufacturing Test And Test Information Solutions***



**Single Station Solution**



**Multi- Station Solution**



**Multi-Site, Multi- Station Solution**

# Anagon Presentation Outline

- Anagon Overview
- Strategic Problems/Opportunities
- Anagon Solutions
- Typical Business Tie-Ins
- Summary

## Anagon Corporation

- A Successful Design Engineering Services Firm, In Our Ninth Year Of Business, Located In Hudson, MA.
- We Focus On High Technology Clients Who Make Complex Electronics Products, Helping Them Ramp To Volume Manufacturing.
- We Provide World Class, Scalable, Manufacturing Test Solutions To High Technology Clients, Large And Small.

# Anagon Corporation

- Our Engineering Team Has Over 100 Years Of Automated-Test Experience Designing Test Stations, Test Software, & Test Information Systems.
- Diverse Industry Backgrounds: Telecom, ATE, Defense, Audio, Consumer, Industrial, Computer, Medical Electronics, Automotive.
- Hard To Find Combination Of “Design Engineering Strength” And “Practical Manufacturing Experience.”



## “Anagon” Manufacturing Floors

- GenRad, Westford, MA
- Kachura Industries, Winber, PA
- Yurie Systems, Landover, MD
- Lucent, Landover, MD
- IEC, Newark, NY
- Solectron, Westboro, MA
- Jabil Circuits, Billerica, MA
- Microtouch, Methuen, MA
- Mercury Computer, Chelmsford, MA
- EITech, Lowell, MA
- EMC<sup>2</sup>, Franklin, MA
- EMC<sup>2</sup>, Cork, Ireland
- Sanmina, Manchester, NH
- Benchmark, Hudson, NH
- Interspeed, N.Andover, MA
- Lucent, Andover, MA
- Tellium, Oceanport, NJ
- Tellium, W. Longbranch, NJ
- Coriolis, Boxboro, MA
- Top Layer, Westboro, MA
- BOSE, San Luis, Mexico
- Telsima, Acton, MA
- ACT, Hudson, MA

## Anagon's Client List

- GenRad
- Yurie Systems
- Lucent Technologies (Bell Labs)
- Lucent Technologies (Prominet)
- MicroTouch (3M)
- Interspeed Networks
- Bose
- Crossbeam Systems
- Telsima
- Caliper Life Sciences
- Sycamore Networks
- Tellium
- Coriolis Networks
- Lockheed-Martin Information Systems
- Top Layer Networks
- Mercury Computer Systems
- EMC<sup>2</sup>
- Teradyne
- Revolabs

### Anagon Client Case Study: Yurie Systems, Landover, MD (1996 – 1999)



**Dr. Jeong H. Kim**  
**Yurie Systems Founder,**  
**Chairman, CEO, & Majority Owner**

**1992:** Founded Yurie Systems

**1995:** Developed LDR 200 Product Family,  
First Commercially Successful ATM  
(Asynchronous Transfer Mode) Product In U.S.

**1996 - 1999:** Hired Anagon To Develop And  
Execute Manufacturing Test Strategy And  
Infrastructure

**1997:** Successful IPO, Then Sold Yurie To  
Lucent For \$1B (Jeong Owned 51% = \$510M)

**2005:** President, Bell Labs

### Anagon Client Case Study: Yurie Systems, Landover, MD (1996 – 1999)

#### *Full Manufacturing Test Solution: 3 Engineers: 3 Years*

**Customer Need:** In 4Q96, Shipped Engineering Quantities (~200) LDR200 Modules. Needed To Ship Manufacturing Quantities (~1800) In 3 Months!

**Solution Phase 1:** Anagon Defined, Designed, Developed, and Deployed 10 Test Stations And ~20 Test Sequences On 3 Floors 1Q97. (Made The Numbers; Impressed The Analysts; Superb IPO)

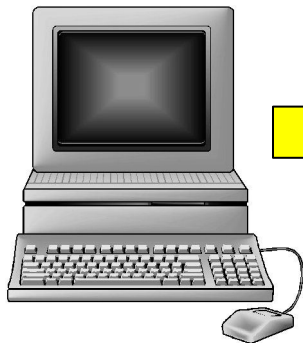
**Solution Phase 2:** Anagon Defined And Designed A Full Manufacturing Test Strategy And Helped Yurie Build Out It's Manufacturing Test Infrastructure.

**Solution Phase 3:** After Lucent Buyout, Deployed Entire Manufacturing Test Infrastructure To Solectron, Westboro, MA. (Ramped To \$25M/Quarter Using Original Architecture!)

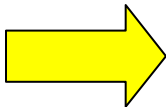


## Anagon's Architecture Is Designed To Scale

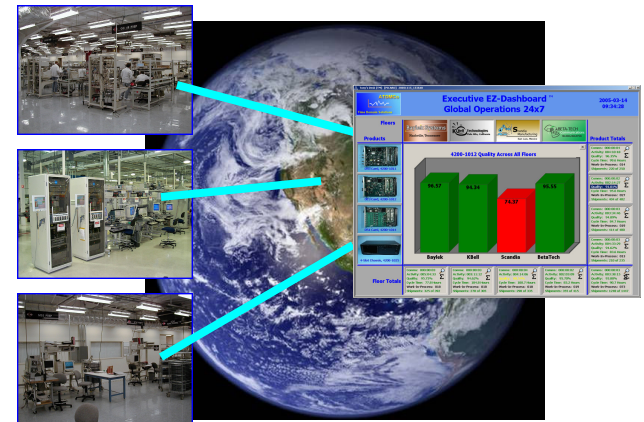
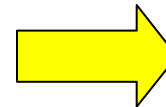
- Anagon Solutions Fit Your Stage Of Development.
- Expand Your Solutions As Your Company Grows.
- With Anagon, The Test Infrastructure You Start With Is The One You Finish With.



**Single Station Solution**



**Multi- Station Solution**



**Multi-Site, Multi- Station Solution**

## **Controlling The Quality Of High Performance, Complex, Electronics Systems Is A Challenge!**

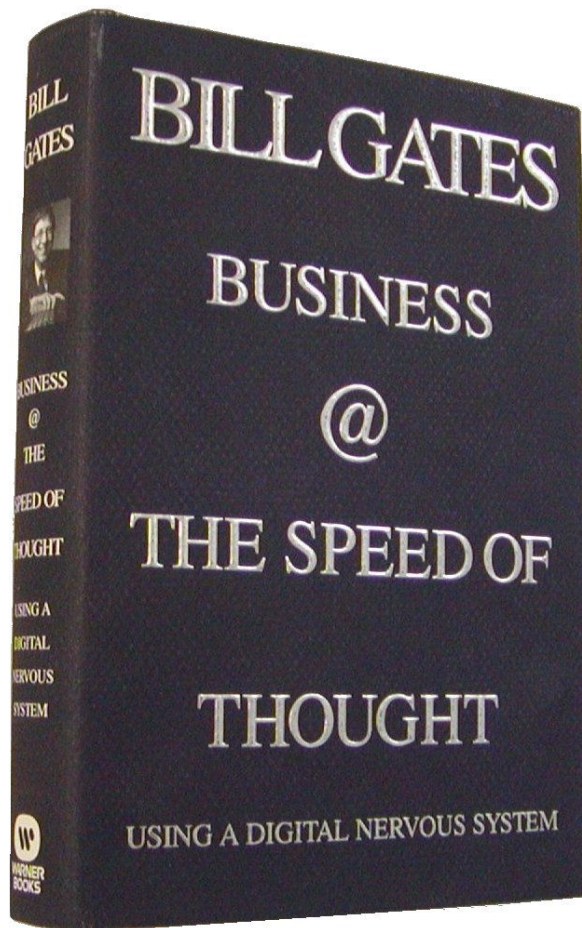
- Poor Product Quality = Bad Company Reputation
- How Good Is Your Design? (Design Margins)
- How Good Is Your Manufacturing Process? (Manufacturing Variance)
- If You Really Don't Know, You Will Probably Not Succeed.

# Potential Customers Scrutinize Your Operations!

- Once You Get By The Technical Hurdles, Your Operations Are Evaluated.
- What's Your Manufacturing Test Strategy? What Kind Of Quality System Is In Place? How Do You Control Your Contract Manufacturers?
- A State Of The Art Manufacturing Infrastructure Can Be A Huge Competitive Advantage.



# 21<sup>st</sup> Century Companies Need To Use Information!



“How You Gather, Manage, And Use Information Will Determine Whether You Win Or Lose.”

“People Have Lived For So Long Without Information At Their Fingertips That They Don’t Realize What They Are missing.”

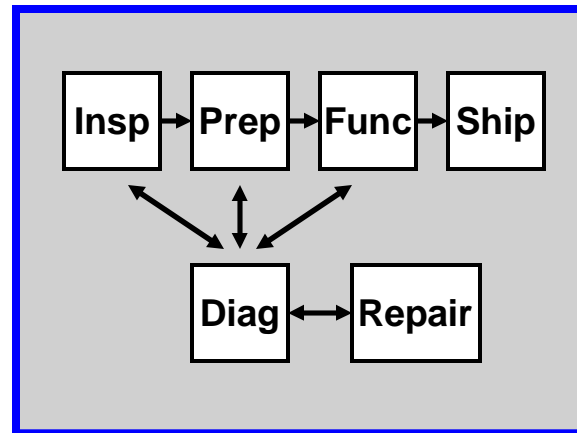
“... VP’s From Different Departments Show Up At High Level Meetings With Different Data!”



## Quick “Strategic Issues” Recap:

- Product Quality: How Good The Design? Manufacturing Variance?
- Your Customers Will Scrutinize Your Operations: Modern Manufacturing Infrastructure? Do You Understand And Control Your Quality?
- Information In The 21<sup>st</sup> Century Is A Competitive Necessity

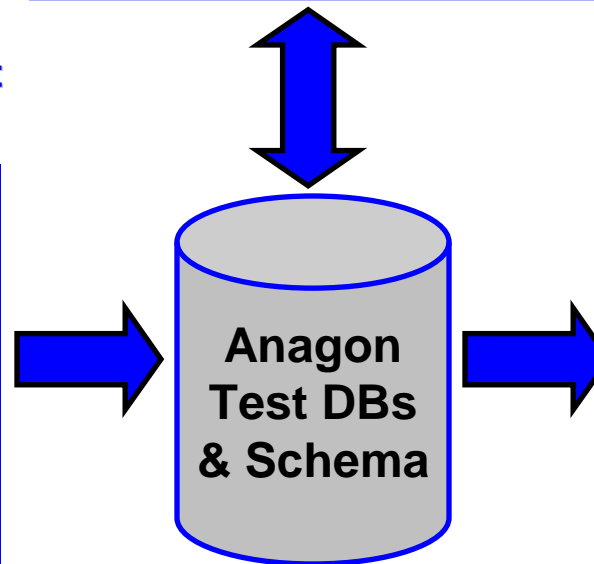
## Automatic Floor Routing & Control For Each Product



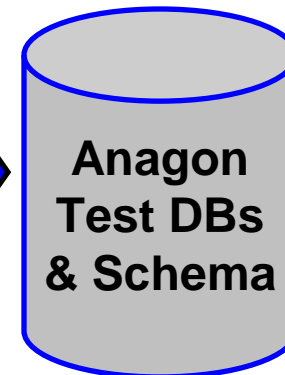
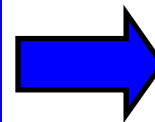
## World Class Automated Test On The Manufacturing Floor



## 24/7 Worldwide Test Information Delivery



## World Class Automated Test On The Manufacturing Floor



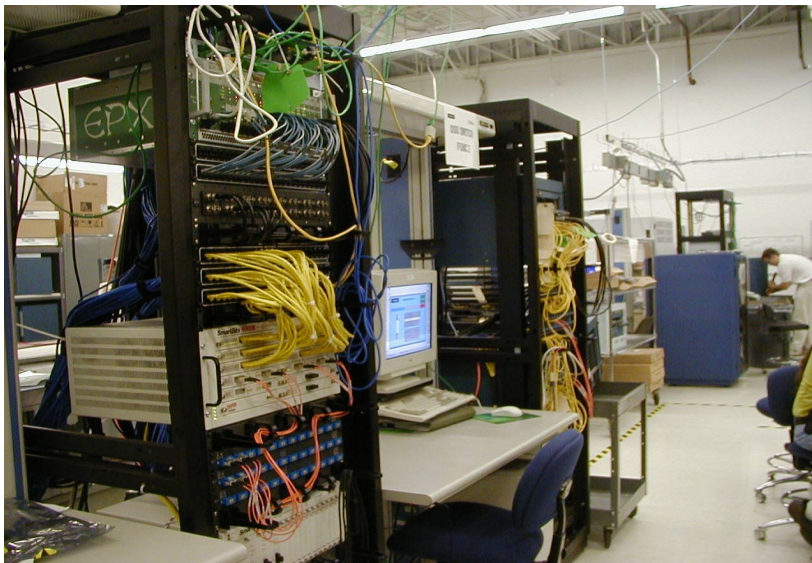


## We Design Automated Test Stations That Support Your Manufacturing Test Strategy Specifications:

We Typically Work Directly With Your Architects And Engineers To Develop A Comprehensive Test Strategy.

We Have Deep Technical Knowledge Of Automated Electronic Measurements And Instrumentation.

We Provide Test Station Definition, Design, Construction, Integration, And Deployment Services.







**We Provide ATest™, A Powerful, Flexible, Test Execution And Development Environment.**

Test Sequences Can Be Quickly Designed To Provide Step By Step Instructions And Pictures For Low Skilled Operators.

Hundreds Of Tests Can Be Rapidly Executed Using Complex Instrumentation For Every Unit Produced.

All Resulting Measurement Can Be Analyzed And Saved Into Anagon Test Databases



**We Provide ATest™, A Powerful, Flexible, Test Execution And Development Environment.**

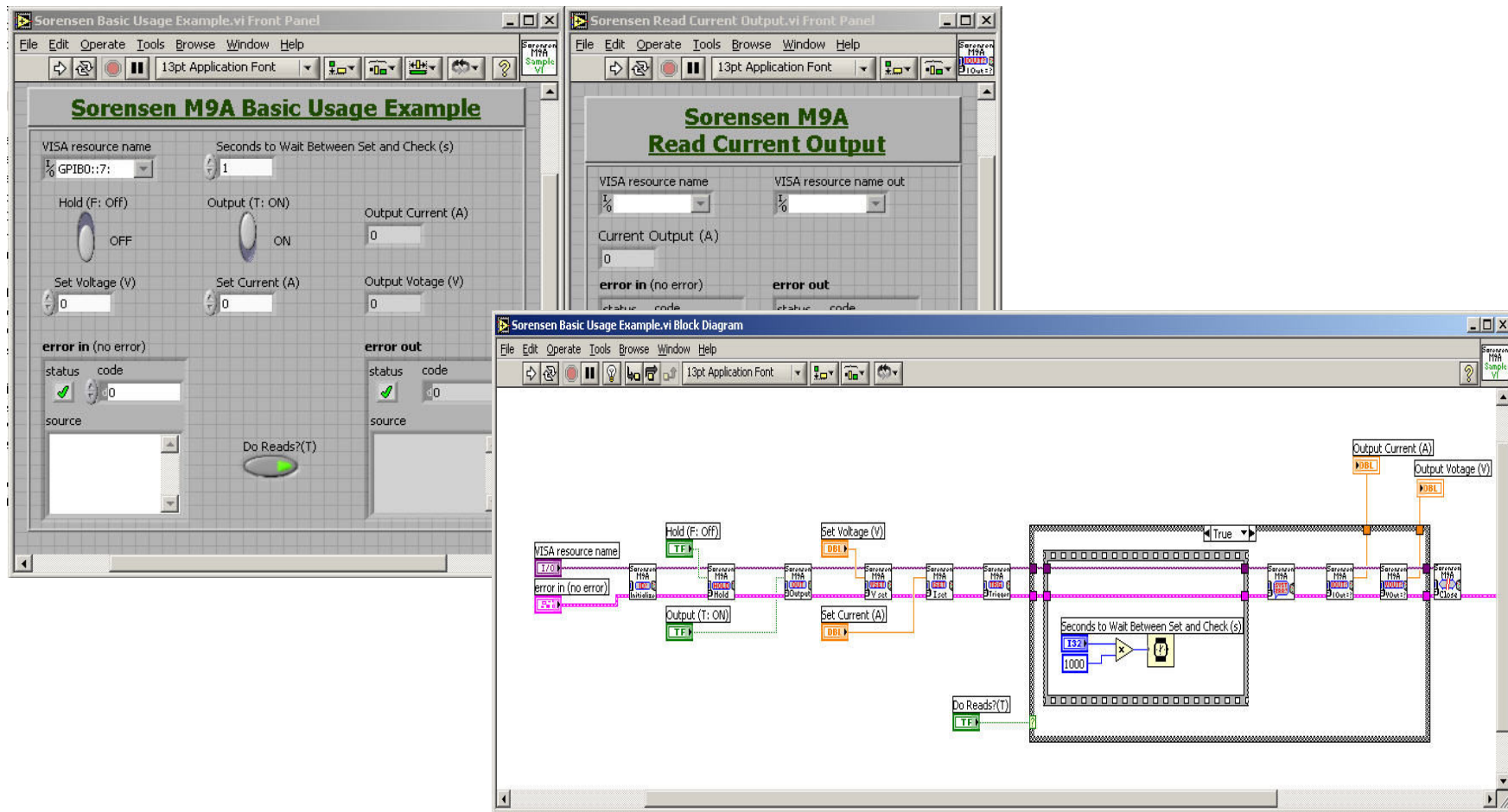
ATest™ Supports A Large Library Of Instrument Drivers From All Major Vendors.

ATest™ Contains A Flexible Set Of Code Assemblies That Perform Common System Tasks.

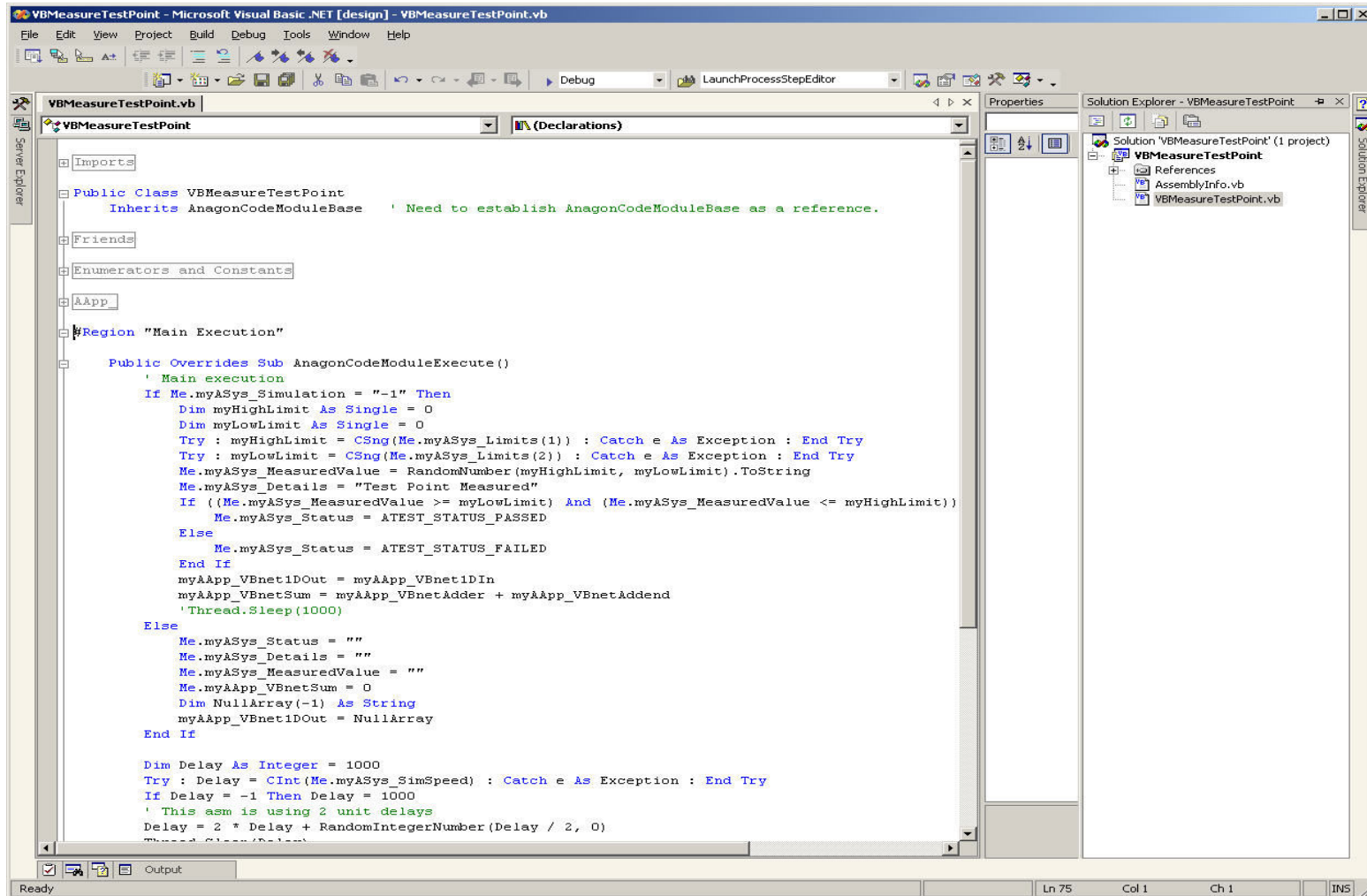
ATest™ Has A Powerful Debug Environment That Makes Test Development Efficient.

# A

## Test™ Directly Supports LabVIEW® Programming

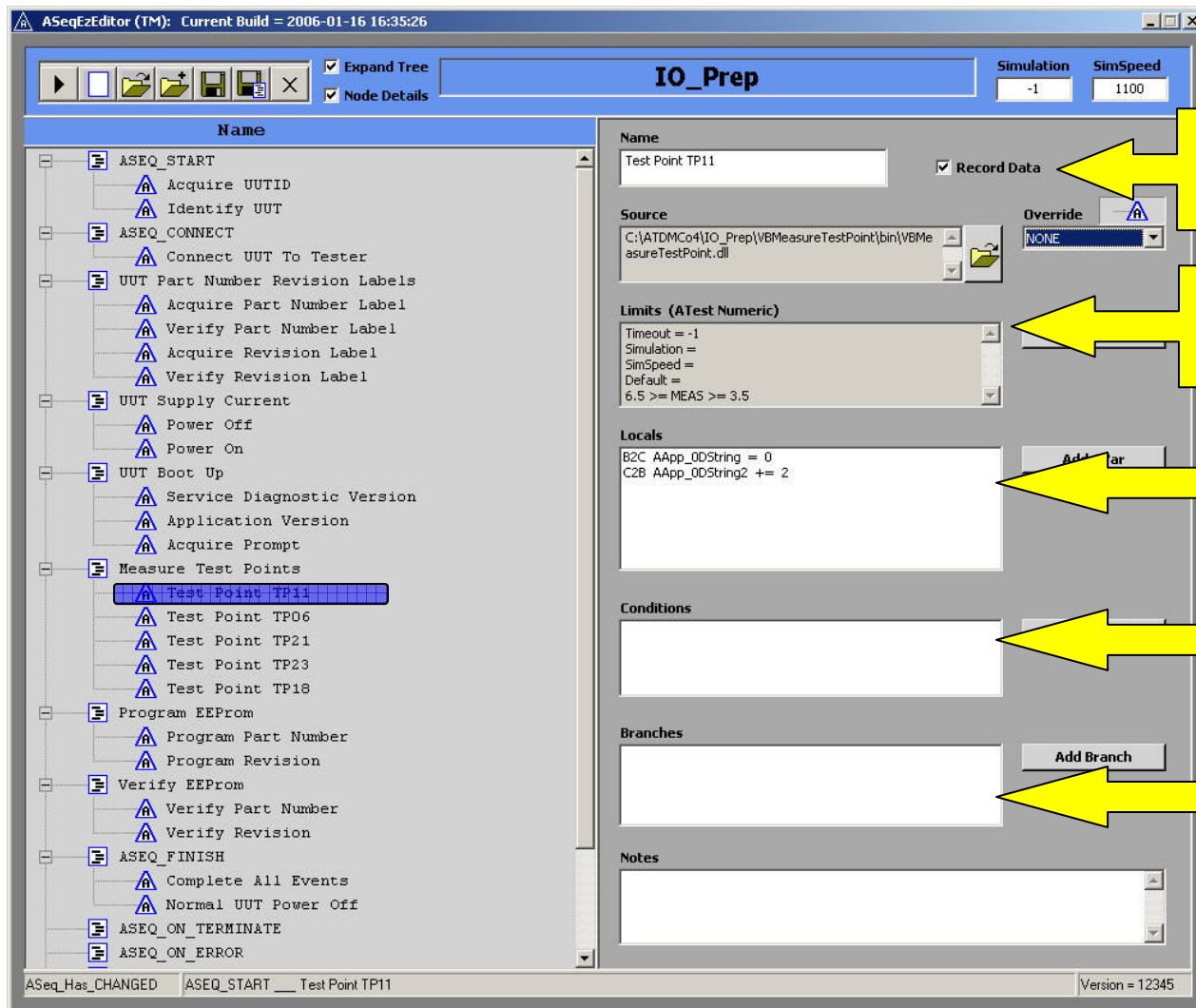


# ATest™ Directly Supports .Net® Programming





## ATest™ Has A Powerful Sequence Editor/Debugger



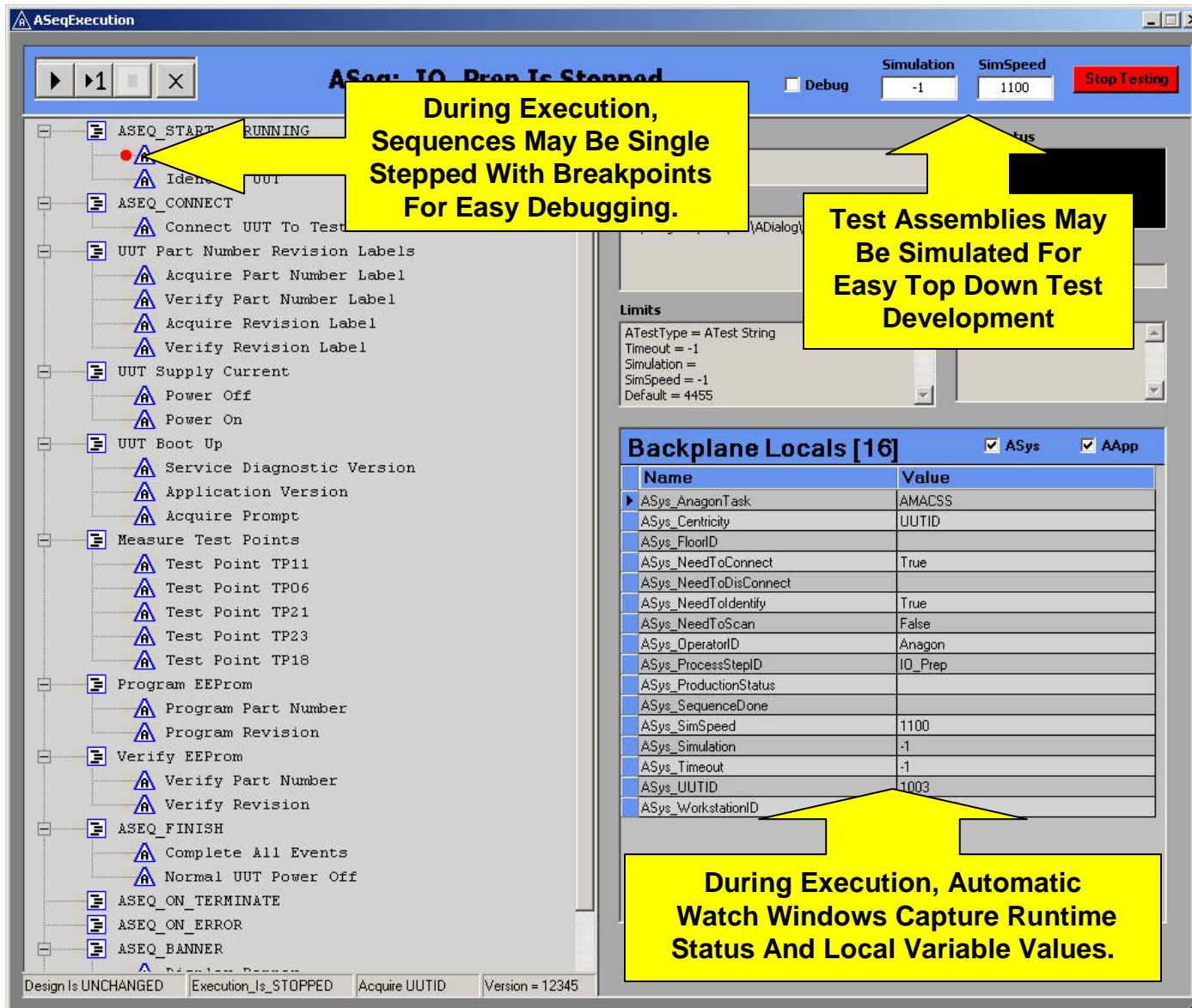
**Automated Data Collection**

**Test Limits May Be Specified**

**Local "Backplane" Variables May Be Specified**

**Runtime Conditions May Be Specified**

**Runtime Branching May Be Specified**



**During Execution, Sequences May Be Single Stepped With Breakpoints For Easy Debugging.**

**Test Assemblies May Be Simulated For Easy Top Down Test Development**

**During Execution, Automatic Watch Windows Capture Runtime Status And Local Variable Values.**

**Simulation** **SimSpeed** **Stop Testing**

Debug -1 1100

**Limits**

ATestType = ATest String  
Timeout = -1  
Simulation =  
SimSpeed = -1  
Default = 4455

**Backplane Locals [16]** ☒ ASys ☒ AApp

Name	Value
ASys_AnagonTask	AMACSS
ASys_Centricity	UUTID
ASys_FloorID	
ASys_NeedToConnect	True
ASys_NeedToDisconnect	
ASys_NeedToIdentify	True
ASys_NeedToScan	False
ASys_OperatorID	Anagon
ASys_ProcessStepID	IQ_Prep
ASys_ProductionStatus	
ASys_SequenceDone	
ASys_SimSpeed	1100
ASys_Simulation	-1
ASys_Timeout	-1
ASys_UUTID	1003
ASys_WorkstationID	

Design Is UNCHANGED Execution\_Is\_STOPPED Acquire UUTID Version = 12345

The A<sup>Test</sup>™ Environment Helps  
You Get To Floor Deployment As  
Quickly And Easily As Possible!

As Each Unit Is Tested ...

Acquire Prompt = >

Measure Test Points

Test Point TP11 = 4.206424

Test Point TP06 = 13.16721

Test Point TP21 = 42.38121

Test Point TP23 = 21.17937

Test Point TP18 = 9.048774

Program EEPROM

... Every Measurement  
Can Be Saved !!

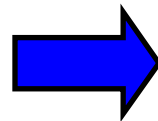


Our Automated Test Stations Rapidly Make 100's Of Electronics Measurements On Every Unit Produced!

This Ensures That Each Unit Is Tested The Same Way, Every Time, Automatically, With No Mistakes!

Low Skilled Operators Can Be Used.

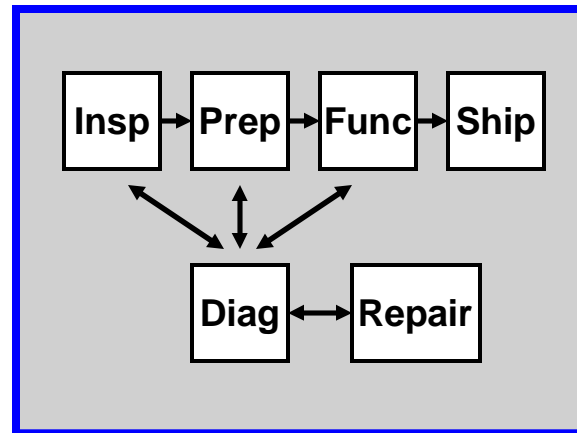
**World Class Automated Test  
On The Manufacturing Floor**



Anagon  
Test DBs  
& Schema

Strategic Benefits:  
Measure Your Design  
Measure Process Variance  
Impress Your Customers

## Automatic Floor Routing & Control For Each Product



## World Class Automated Test On The Manufacturing Floor

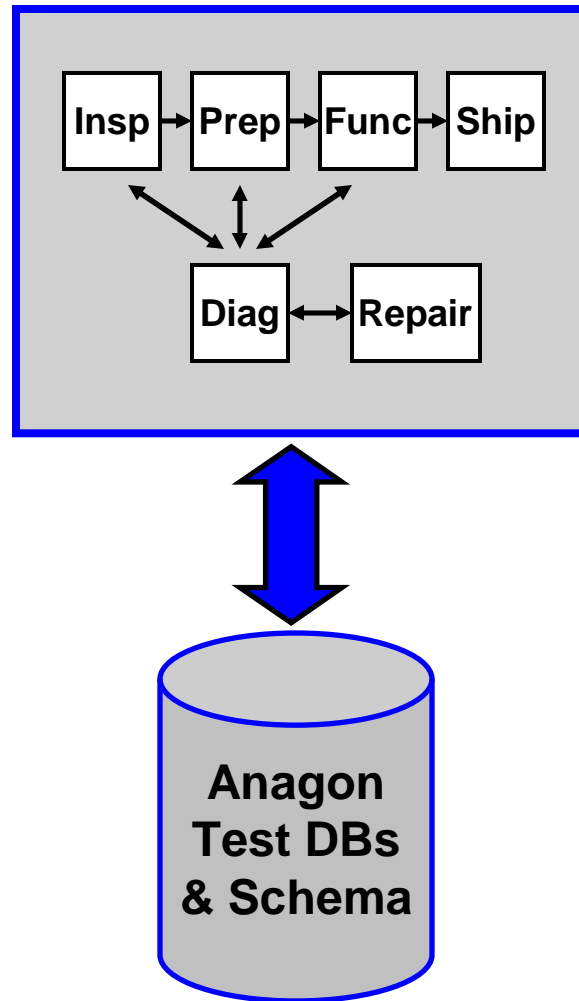


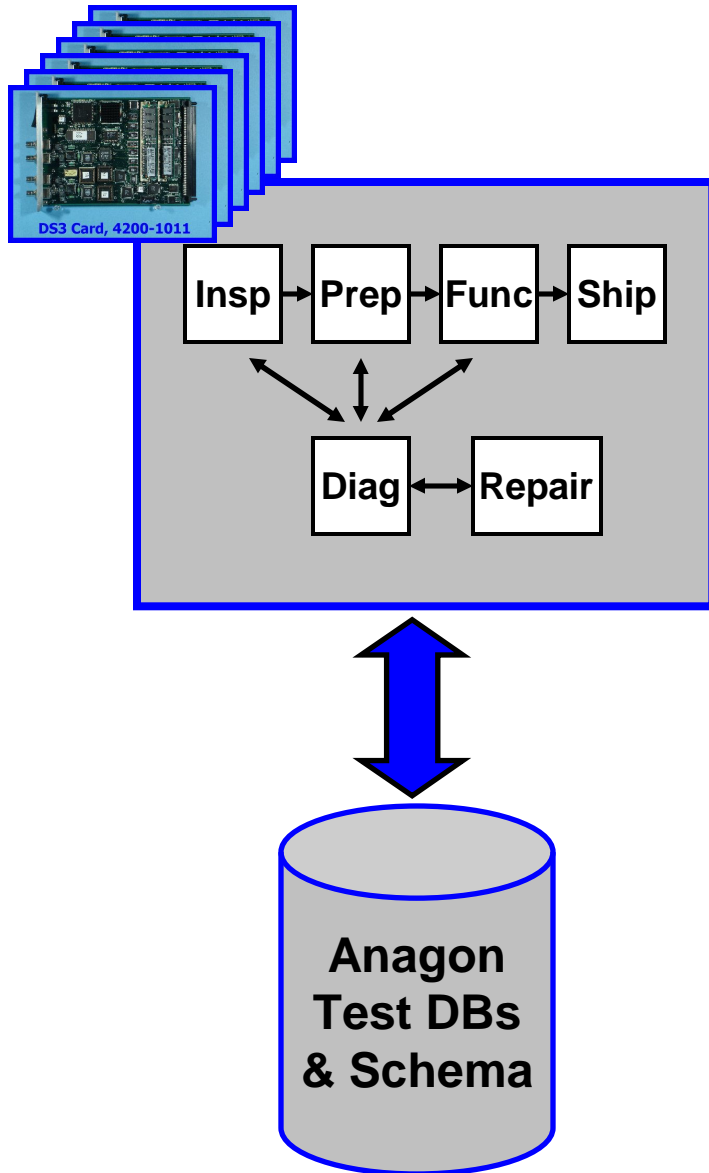
## 24/7 Worldwide Test Information Delivery



**Anagon  
 Test DBs  
 & Schema**

## Automatic Floor Routing & Control For Each Product



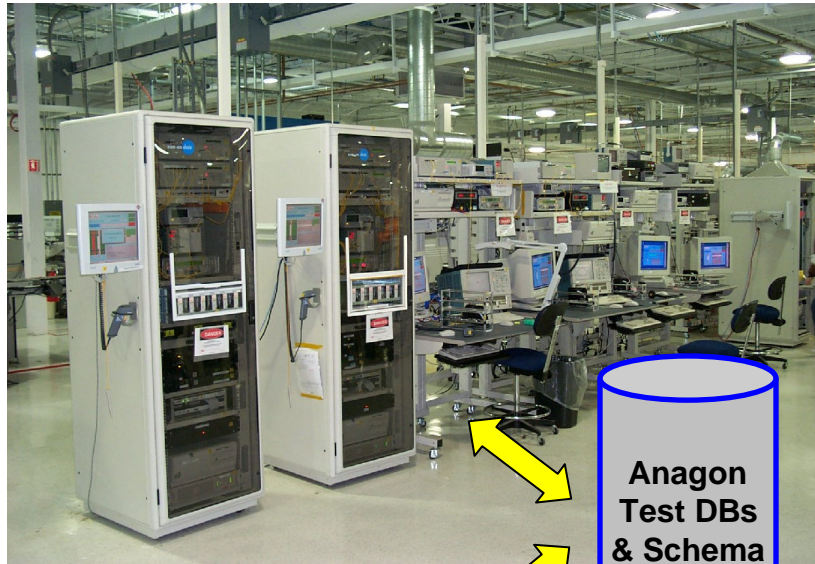


## To Understand Your Process, You Must Automatically Control And Manage The Manufacturing Floor.

Complex Products Are Fabricated, Inspected, Programmed, And Tested In Defined Steps, Before Shipping To Customers.

Mistakes May Occur As Hundreds Of Units Are Moved And Processed At Different Test Stations By Low Skilled Personnel.

AMacss™ Eliminates Floor Chaos And Ensures That Each Product Is Correctly Routed To All Specified Process Steps.



## AMacss™ Uses A Powerful Model Of The Manufacturing Floor And Its Processes.

Based On Years Of Practical Manufacturing Experience, Anagon Has Developed A Flexible Data Model That Embodies AMacss.

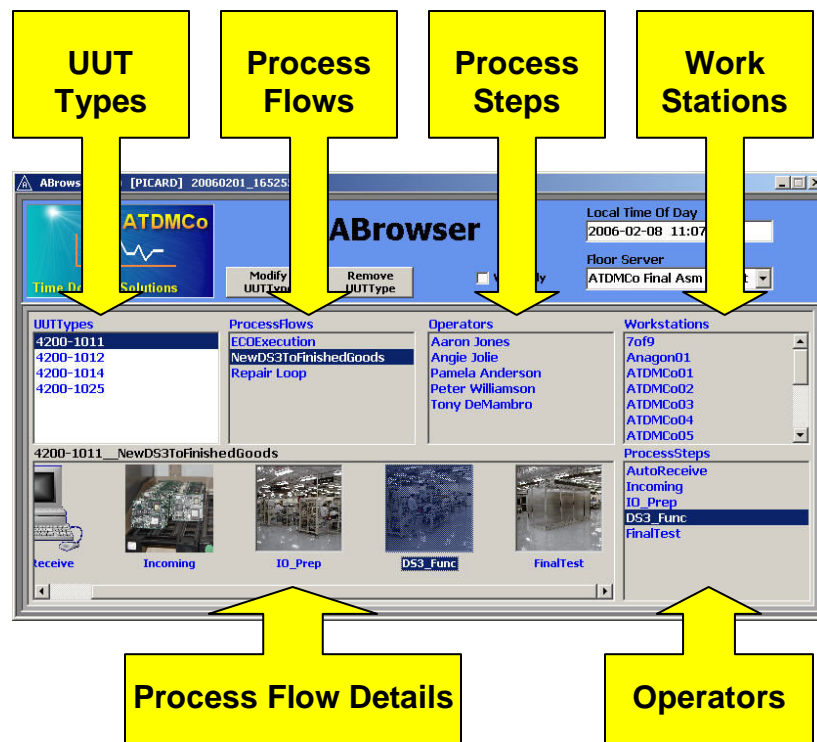
Your Actual Test Stations, Process Steps, UUT Types, Operators, And Process Flows Can Be Modeled Directly Into The System.

The Model Is Read Instantaneously By All Test Stations On The Floor, Thus Providing Control And Management Automatically.





## Main ABrowser™ Screen



## ABrowser™ Provides An Easy To Use, Graphical User Interface To Input And Maintain Your Model.

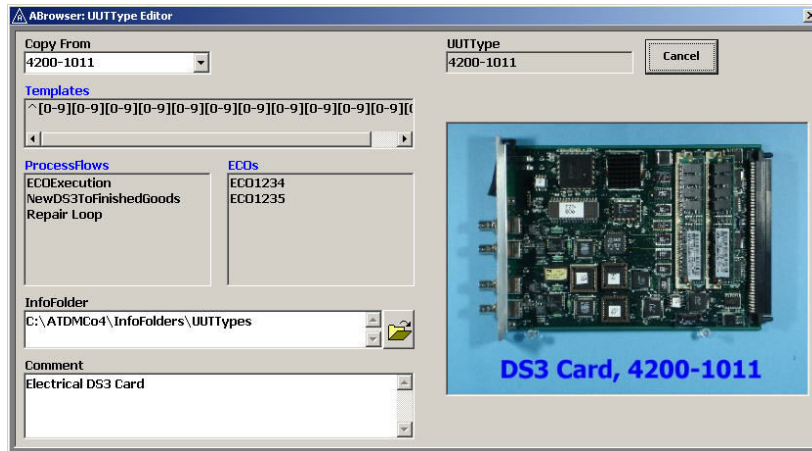
The Main Screen Provides An Executive Overview Of The Floor, Highlighting The Relationships Among Major Floor Objects.

The Major AMacss Objects Are: UUTType\*, ECO, ProcessFlow, ProcessStep, Workstation, And Operator.

Each Object Has Its Own Editor, Which Allows Your Administrator To Add, Modify, Or Remove It.

\* UUT Stands For "Unit Under Test". UUTType Corresponds To Any Part Number That AMacss Works On.

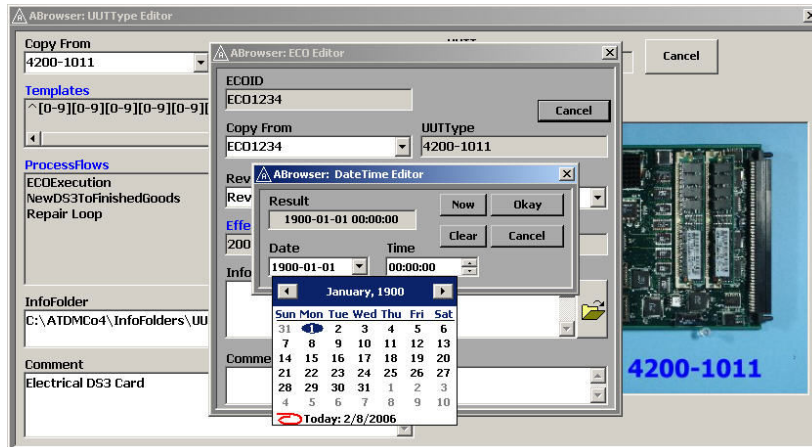
## UUTType Editor



## ABrowser™ Provides An Easy To Use, Graphical User Interface To Input And Maintain Your Model.

UUTType (Part Number) Is “What” Is Being Tested. Typically, Several Different Types Of Units Are On The Floor.

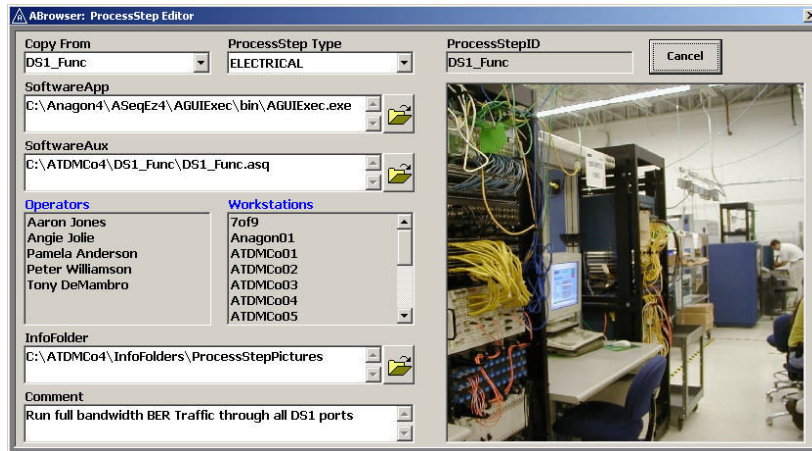
## ECO Editor



Generally, Each UUTType Is Tested Along Different ProcessFlows And Has A Unique ECO History.

ECO's Document Engineering Changes To UUTTypes. As Each ECO Is Sent To The Floor, Routing Is Automatically Adjusted.

## ProcessStep Editor



## ABrowser™ Provides An Easy To Use, Graphical User Interface To Input And Maintain Your Model.

ProcessSteps Are Value Added Operations That Are Performed On UUTs (Inspection, Repair, Programming, Electrical Test).

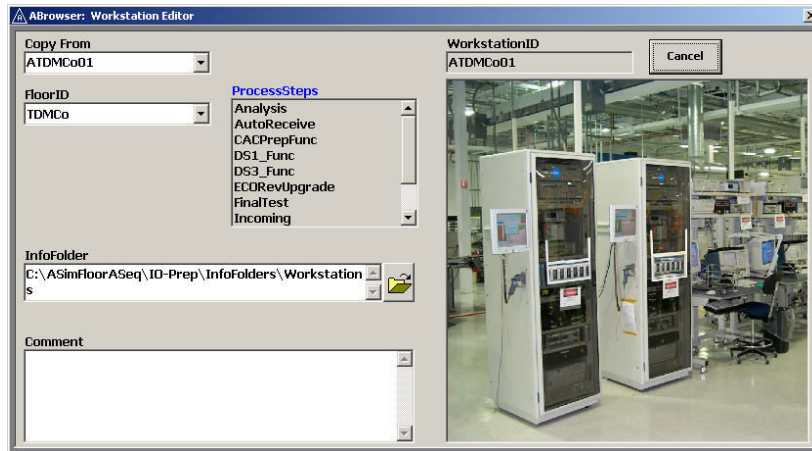
ProcessSteps, Such As “DS1\_Func”, Execute Customized Test Sequences Developed By Test Engineers Using Anagon’s ATest™.

## ProcessFlow Editor



ProcessFlows Specify An Ordered Set Of ProcessSteps That Accomplish A Collective Goal (“NewDS3ToFinishedGoods”).

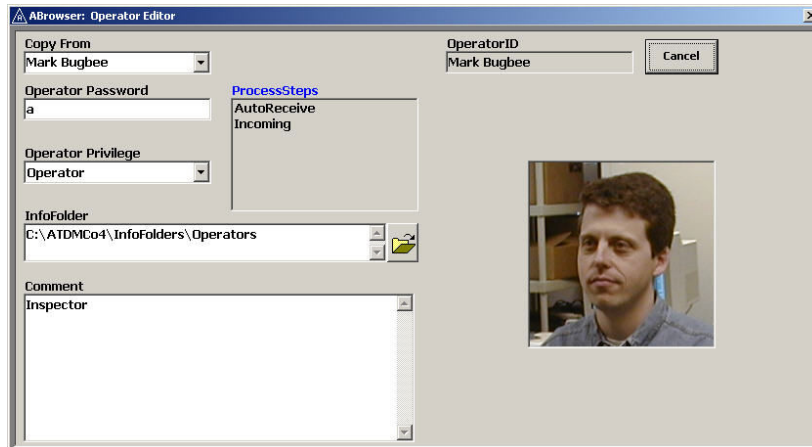
## Workstation Editor



## ABrowser™ Provides An Easy To Use, Graphical User Interface To Input And Maintain Your Model.

Workstations Are Physical Collections Of Equipment On Which ProcessSteps Are Executed Against UUTs.

## Operator Editor



Workstations Typically Consist Of Fixtures, Computers, Electronic Instruments, Bar Code Scanners, Cabinetry, And Cabling.

Operators Are People Who Work On The Floor. Different Roles Are Modeled. Passwords And Privilege Levels Are Stored.



ATraveler (TM) Current Build = 20060112\_101733

**ATDMCo** ☒ **ATraveler™**  
**UUTID = 215092203095**

Time Domain Solutions

UUTType = 4200-1014 Revision = Rev13 Currently At: :: AutoShip



**DS1 Card, 4200-1014**

**Assembly Status**

- Current UUTType = 4200-1014
- Current ECO = ECO\_4412
- Current Revision = Rev13
- Latest ECO = ECO\_4412
- Latest Revision = Rev13

**Current Genealogy**

- LDR200 System 4400-1522: 215092206128
  - DS1 Card 4200-1014: 215092203095**
    - DS1 PortAsm 3800-1254: 215088203031
    - 16Gig Mem 3800-1889: 215065203068
    - 16Gig Mem 3800-1889: 215065203073
  - DS3 Card 4200-1011: 215092203047
    - 64Gig Mem 3800-1867: 215065203022
    - 64Gig Mem 3800-1867: 215065203015

Events: 4 Steps: 18 Meas: 53 Details 2005-03-14 09:31:28.812

215092203095 -- AutoReceive

- Received UUTID Onto Floor
- 215092203095 -- Incoming
- UUT Identified
- Verify Identifying Labels
- Perform Label Side Inspection
- Next ProcessStep Computed

215092203095 -- Incoming

- UUT Identified
- Verify Identifying Labels
- Perform Label Side Inspection
- Perform ASIC Side Inspection
- Next ProcessStep Computed

215092203095 -- IO\_Prep

- UUT Identified
- UUT Part Number Revision Labels
- UUT Supply Current
- UUT Boot Up
- Measure Test Points
- Program EEPROM
- Verify EEPROM
- Next ProcessStep Computed

**EVENT DETAILS**

UUTID = "215092203095"

UUTType = "4200-1014"

Revision = "Rev13"

Event\_DateTime = "2005-03-11 14:04:46.307"

Event\_Duration = "0"

FloorID = "KBELL"

ProcessFlowID = "NewDS1ToFinishedGoods"

ProcessStepID = "AutoReceive"

WorkstationID = "ATDMCo1"

OperatorID = "Aaron Jones"

## ATraveler™ Provides Detailed History Of Any Individual UUT.

UUT Status Such As: Revision, ECO, And Genealogy Is Shown.

All Events, Steps, And Measurements Are Shown In Chronological Order.

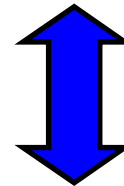
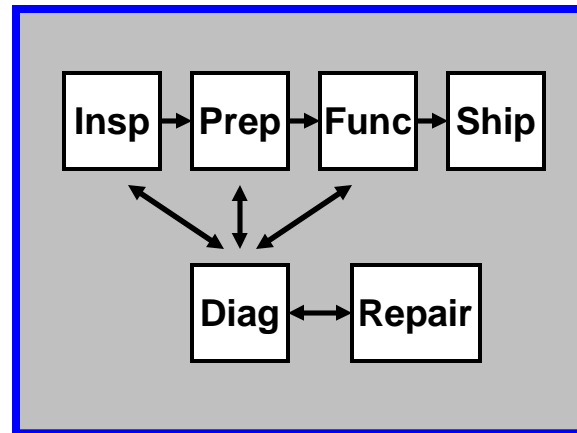
Details Of Events, Steps, And Measurements Are Shown.

**Complex Products Are Fabricated, Inspected, Programmed, And Tested In Defined Steps, Before Shipping To Customers.**

**Mistakes May Occur As Hundreds Of Units Are Moved And Processed At Different Test Stations By Low Skilled Personnel.**

**Our System Eliminates Floor Chaos And Ensures That Each Product Is Correctly Routed To All Specified Process Steps.**

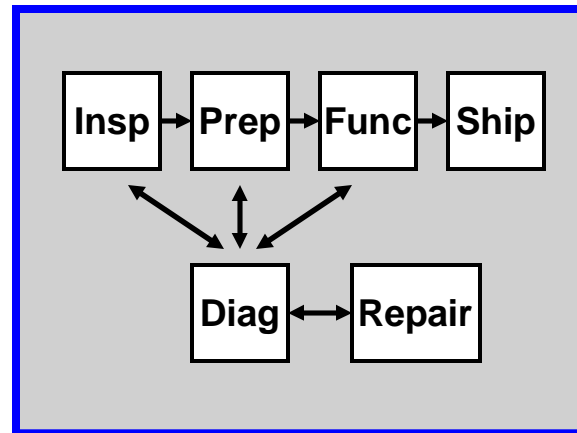
### **Automatic Floor Routing & Control For Each Product**



**Anagon  
Test DBs  
& Schema**

**Strategic Benefits:  
Reduce Process Variance  
Control Your CM's  
Impress Your Customers**

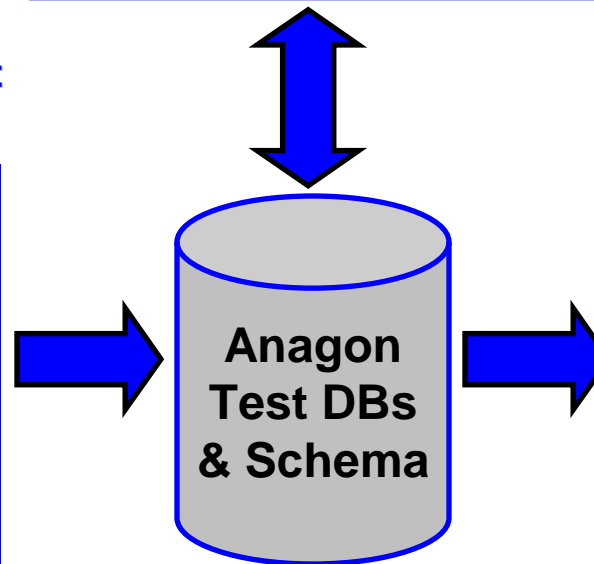
## Automatic Floor Routing & Control For Each Product



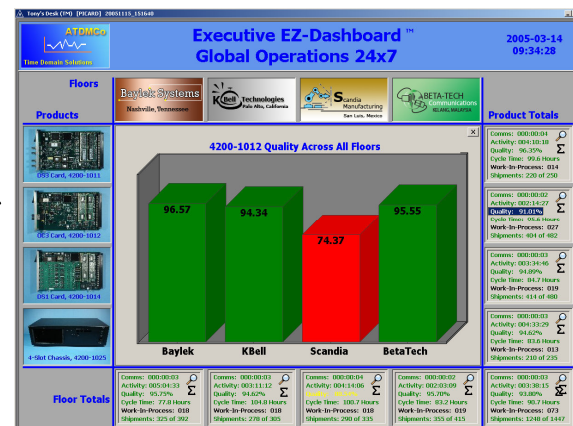
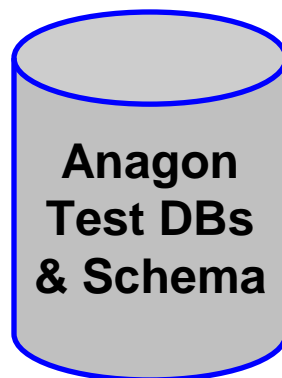
## World Class Automated Test On The Manufacturing Floor



## 24/7 Worldwide Test Information Delivery



## 24/7 Worldwide Test Information Delivery











**At Each Remote Manufacturing Floor, Precise, Comprehensive, Tests Are Made On Every Unit!**

**As Each Unit Is Tested ...**

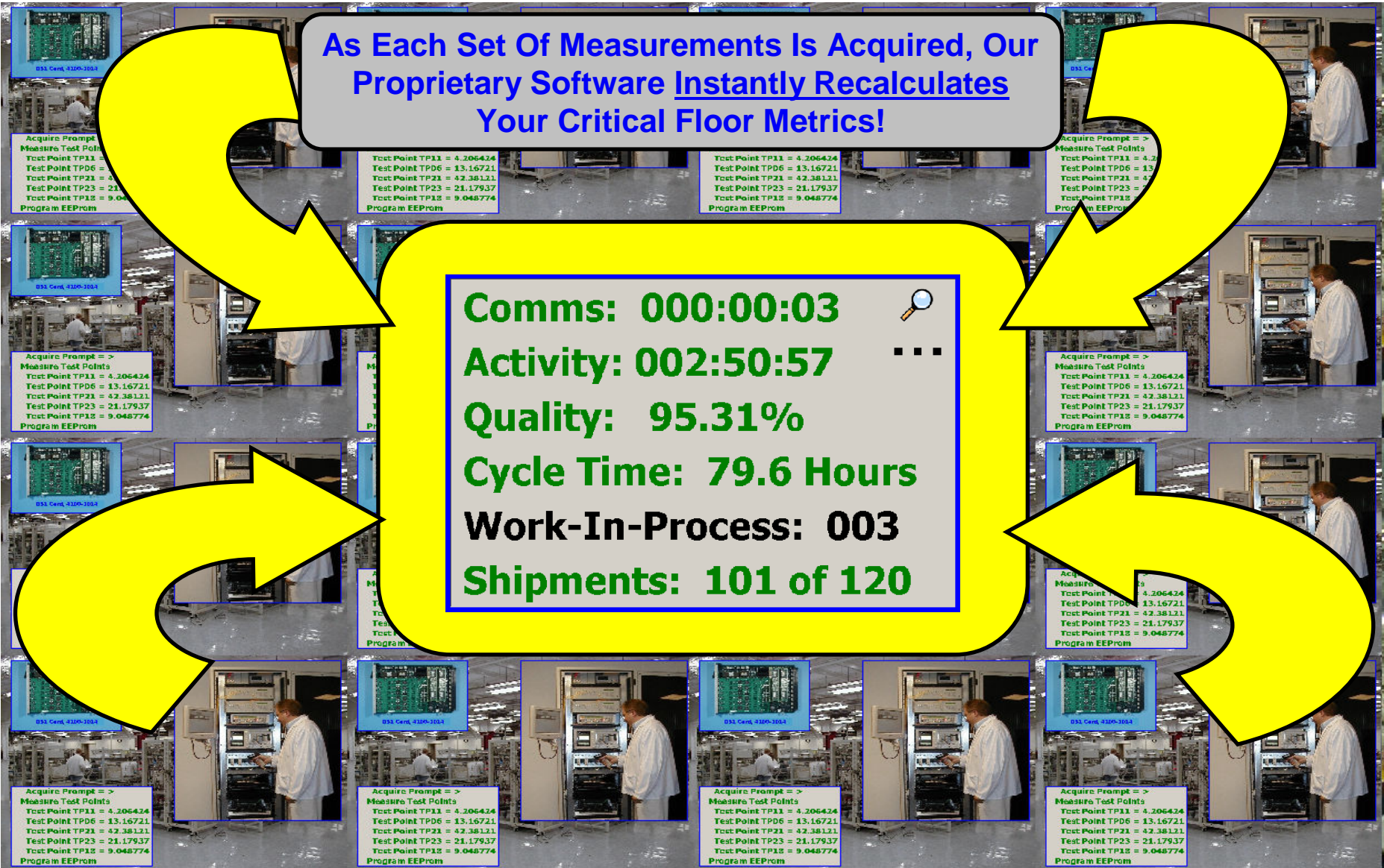
**Acquire Prompt = >**  
**Measure Test Points**  
**Test Point TP11 = 4.206424**  
**Test Point TP06 = 13.16721**  
**Test Point TP21 = 42.38121**  
**Test Point TP23 = 21.17937**  
**Test Point TP18 = 9.048774**  
**Program EEPROM**

**... Every Measurement Can Be Saved !!**



As Each Set Of Measurements Is Acquired, Our  
Proprietary Software Instantly Recalculates  
Your Critical Floor Metrics!

**Comms: 000:00:03**  
**Activity: 002:50:57**  
**Quality: 95.31%**  
**Cycle Time: 79.6 Hours**  
**Work-In-Process: 003**  
**Shipments: 101 of 120**















Tony's Desk (TM) [PICARD] 20051115\_151640



**ATDMCo**  
Time Domain Solutions

**You Can Get Trustworthy Answers To Important High Level Questions In Seconds Instead Of Days!**

**2005-03-14 09:39:35**

**Floors**

**Products**



DS3 Card, 4200-1011



OC3 Card, 4200-1012



DS1 Card, 4200-1014



4-Slot Chassis, 4200-1025

Baytek Systems  
Nashville, Tennessee

**Are My Total Shipments On Track For This Quarter ?**

BETA-TECH Communications  
KELANG, MALAYSIA

**Comms: 000:00:02**

**Activity: 003:43:22**

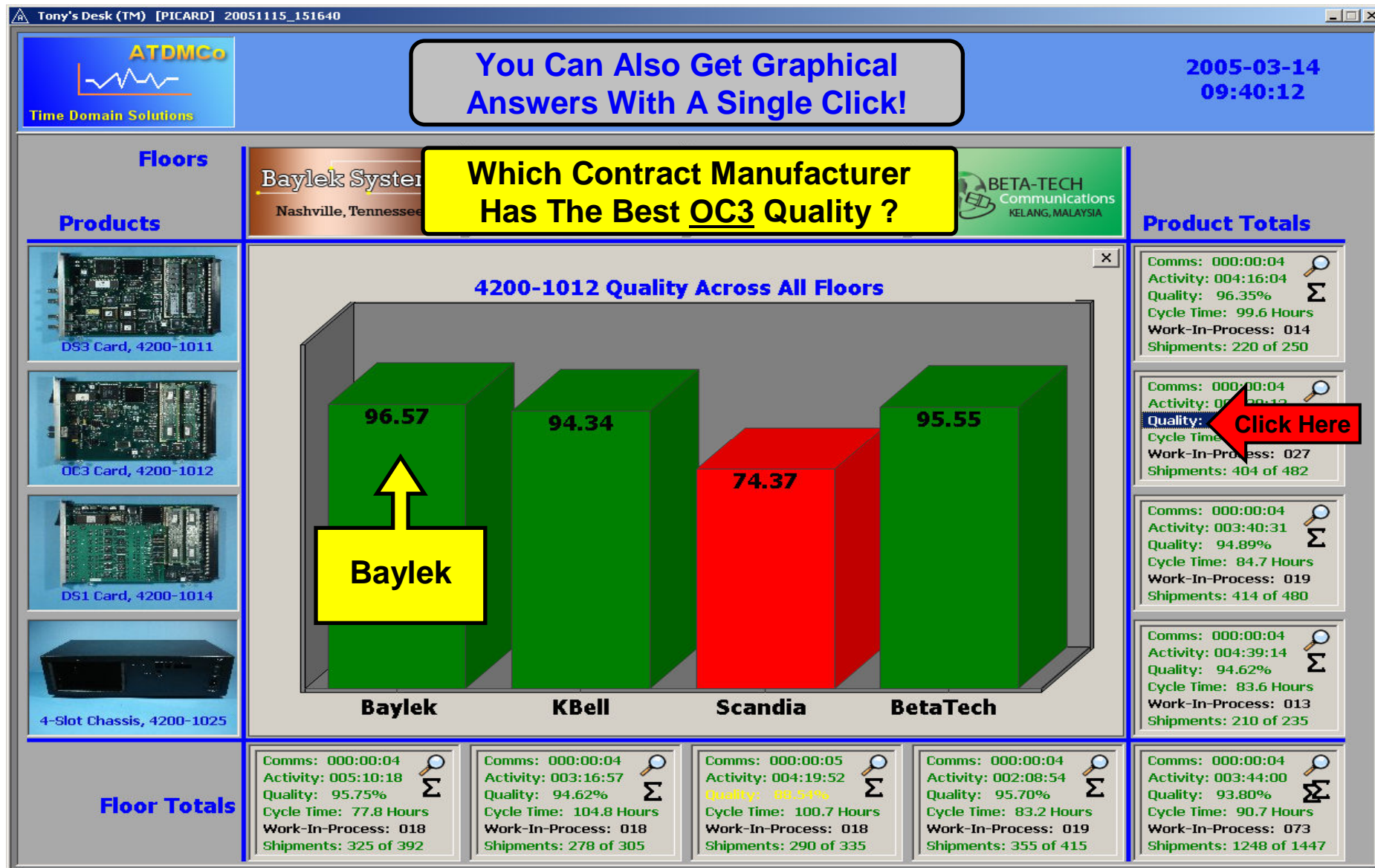
**Quality: 93.80%**

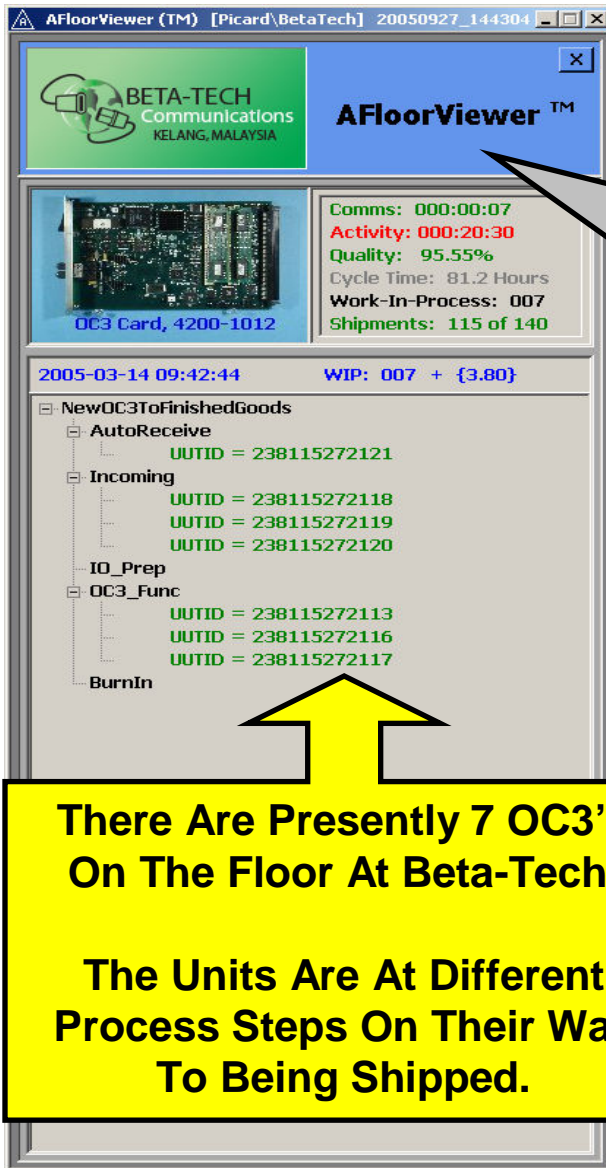
**Cycle Time: 90.7 Hours**

**Work-In-Process: 073**

**Shipments: 1248 of 1447**

**Yes !**





**AFloorViewer™**

BETA-TECH Communications  
KELANG, MALAYSIA

OC3 Card, 4200-1012

Comms: 000:00:07  
Activity: 000:20:30  
Quality: 95.55%  
Cycle Time: 81.2 Hours  
Work-In-Process: 007  
Shipments: 115 of 140


2005-03-14 09:42:44 WIP: 007 + {3.80}

- NewOC3ToFinishedGoods
  - AutoReceive
    - UUTID = 238115272121
  - Incoming
    - UUTID = 238115272118
    - UUTID = 238115272119
    - UUTID = 238115272120
  - IO\_Prep
  - OC3\_Func
    - UUTID = 238115272113
    - UUTID = 238115272116
    - UUTID = 238115272117
  - BurnIn

**There Are Presently 7 OC3's On The Floor At Beta-Tech.**

**The Units Are At Different Process Steps On Their Way To Being Shipped.**

If You Need Backup Details, Simply Click On The Cell Of Interest And Anagon's AFloorViewer™ Provides Detailed Status Within The Contract Manufacturer Floor!



Click Here

Comms: 000:00:04  
Activity: 000:08:25  
Quality: 95.55%  
Cycle Time: 81.2 Hours  
Work-In-Process: 007  
Shipments: 115 of 140



**AFloorViewer (TM)** [Picard\BetaTech] 20050927\_144304

**BETA-TECH** Communications  
KELANG, MALAYSIA

**AFloorViewer™**

OC3 Card, 4200-1012

Comms: 000:00:01  
Activity: 000:21:52  
Quality: 95.55%  
Cycle Time: 81.2 Hours  
Work-In-Process: 007  
Shipments: 115 of 140

2005-03-14 09:44:06 Shipments: 115

UUTID = 238115272042  
UUTID = 238115272043  
UUTID = 238115272044  
UUTID = 238115272045  
UUTID = 238115272046  
UUTID = 238115272047  
UUTID = 238115272048  
UUTID = 238115272049

050  
UUTID = 238115272050  
UUTID = 238115272051  
UUTID = 238115272052  
UUTID = 238115272053  
UUTID = 238115272054  
UUTID = 238115272055  
UUTID = 238115272056  
UUTID = 238115272057  
UUTID = 238115272058  
UUTID = 238115272059

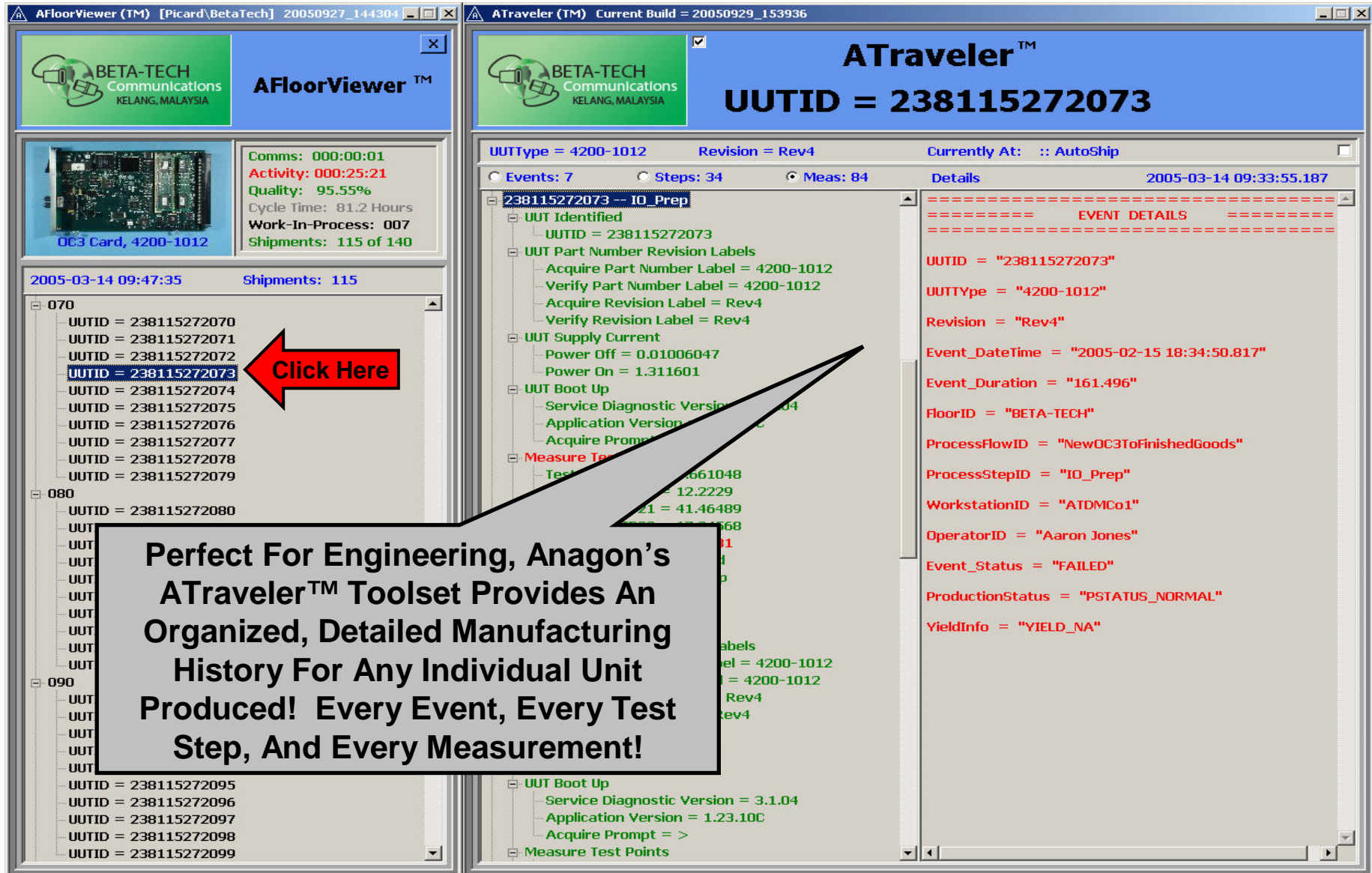
060  
UUTID = 238115272060  
UUTID = 238115272061  
UUTID = 238115272062  
UUTID = 238115272063  
UUTID = 238115272064  
UUTID = 238115272065  
UUTID = 238115272066  
UUTID = 238115272067  
UUTID = 238115272068  
UUTID = 238115272069

070  
UUTID = 238115272070  
UUTID = 238115272071

We Can Also Examine Units  
That Have Already Shipped !

Click Here

Here Are The 115  
Shipped Units.



The screenshot displays the ATraveler™ software interface, which is divided into several sections. The top left section, titled "AFloorViewer™", shows a list of UUTIDs (238115272070 to 238115272099) and a red arrow pointing to the selected UUTID 238115272073. The top right section, titled "ATraveler™", shows the selected UUTID 238115272073 and its details, including UUTType (4200-1012), Revision (Rev4), and Currently At (AutoShip). The bottom left section shows a list of UUTIDs (238115272070 to 238115272099) and a red arrow pointing to the selected UUTID 238115272073. The bottom right section shows the "EVENT DETAILS" for the selected UUTID, including UUTID, UUTType, Revision, Event\_DateTime, Event\_Duration, FloorID, ProcessFlowID, ProcessStepID, WorkstationID, OperatorID, Event\_Status, ProductionStatus, and YieldInfo.

**AFloorViewer™**  
BETA-TECH Communications  
KELANG, MALAYSIA  
Comms: 000:00:01  
Activity: 000:25:21  
Quality: 95.55%  
Cycle Time: 81.2 Hours  
Work-In-Process: 007  
Shipments: 115 of 140  
2005-03-14 09:47:35 Shipments: 115  
070  
UUTID = 238115272070  
UUTID = 238115272071  
UUTID = 238115272072  
UUTID = 238115272073  
UUTID = 238115272074  
UUTID = 238115272075  
UUTID = 238115272076  
UUTID = 238115272077  
UUTID = 238115272078  
UUTID = 238115272079  
080  
UUTID = 238115272080  
UUT  
UUT  
UUT  
UUT  
UUT  
UUT  
UUT  
090  
UUT  
UUT  
UUT  
UUT  
UUT  
UUTID = 238115272095  
UUTID = 238115272096  
UUTID = 238115272097  
UUTID = 238115272098  
UUTID = 238115272099

**ATraveler™**  
UUTID = 238115272073  
UUTType = 4200-1012 Revision = Rev4 Currently At: :: AutoShip  
Events: 7 Steps: 34 Meas: 84 Details 2005-03-14 09:33:55.187  
238115272073 -- IO\_Prep  
UUT Identified  
UUTID = 238115272073  
UUT Part Number Revision Labels  
Acquire Part Number Label = 4200-1012  
Verify Part Number Label = 4200-1012  
Acquire Revision Label = Rev4  
Verify Revision Label = Rev4  
UUT Supply Current  
Power Off = 0.01006047  
Power On = 1.311601  
UUT Boot Up  
Service Diagnostic Version = 3.1.04  
Application Version = 1.23.10C  
Acquire Prompt = >  
Measure Test Points  
Test  
661048  
12.2229  
21 = 41.46489  
68  
1  
1  
0  
Labels  
el = 4200-1012  
= 4200-1012  
Rev4  
Rev4  
UUT Boot Up  
Service Diagnostic Version = 3.1.04  
Application Version = 1.23.10C  
Acquire Prompt = >  
Measure Test Points

**EVENT DETAILS**  
UUTID = "238115272073"  
UUTType = "4200-1012"  
Revision = "Rev4"  
Event\_DateTime = "2005-02-15 18:34:50.817"  
Event\_Duration = "161.496"  
FloorID = "BETA-TECH"  
ProcessFlowID = "NewOC3ToFinishedGoods"  
ProcessStepID = "IO\_Prep"  
WorkstationID = "ATDMCo1"  
OperatorID = "Aaron Jones"  
Event\_Status = "FAILED"  
ProductionStatus = "PSTATUS\_NORMAL"  
YieldInfo = "YIELD\_NA"

Perfect For Engineering, Anagon's ATraveler™ Toolset Provides An Organized, Detailed Manufacturing History For Any Individual Unit Produced! Every Event, Every Test Step, And Every Measurement!





As Each Unit Is Tested, Resulting Measurements  
Can Be Saved And Organized Into Test Information.

This Information Can Be Used To Measure Product  
Quality, Process Variance, Shipments, And WIP.

Our System Automatically Delivers This Information  
From Remote Floors Directly To Your Office, 24/7.

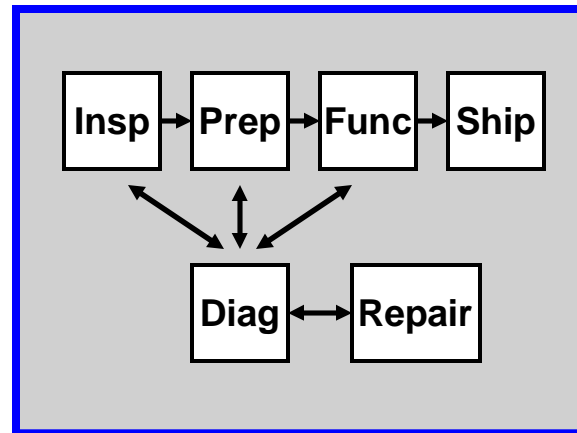
**Strategic Benefits:**  
Understand Your Quality  
Impress Your Customers  
Be Information Driven

Anagon  
Test DBs  
& Schema

**24/7 Worldwide Test  
Information Delivery**



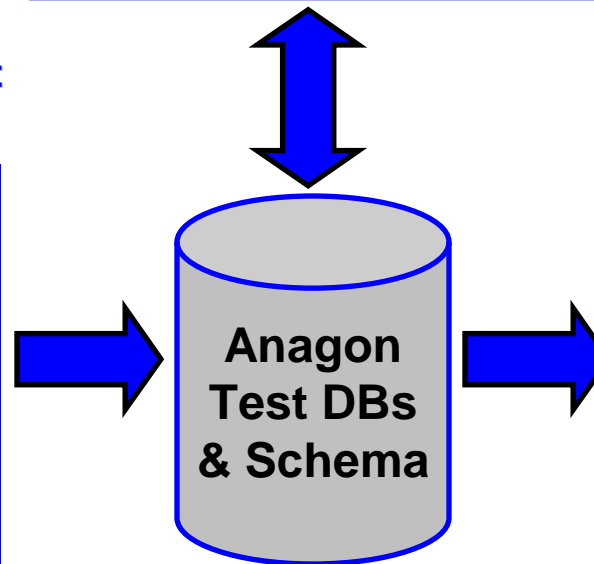
## Automatic Floor Routing & Control For Each Product



## World Class Automated Test On The Manufacturing Floor

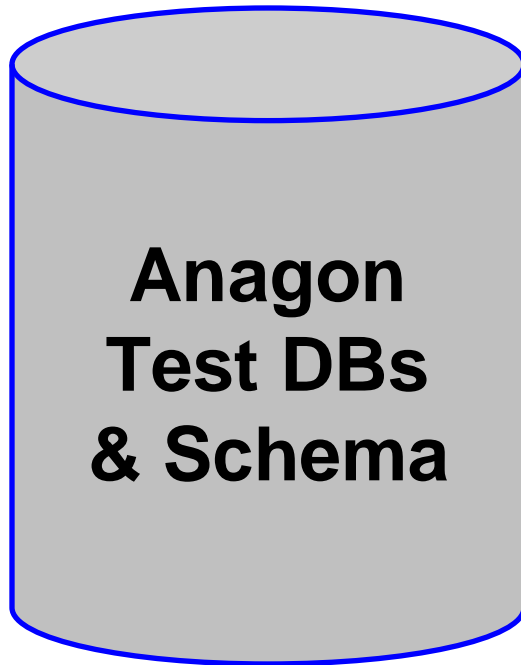


## 24/7 Worldwide Test Information Delivery





### Anagon Test Databases & Schema Provide Key Enabling Technology For Test Information Architecture.

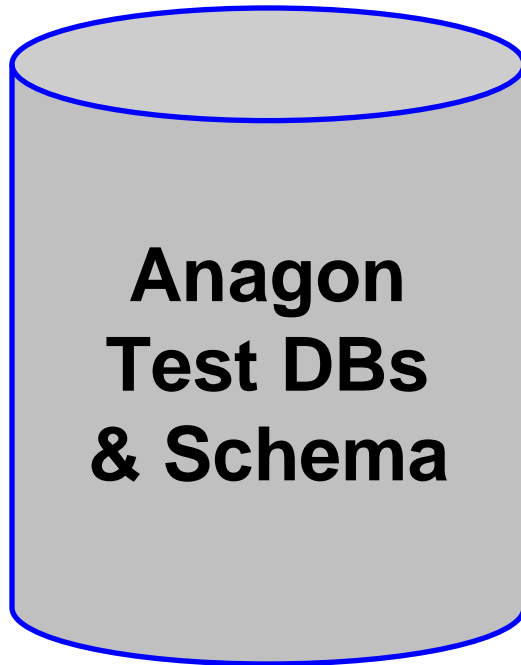


Fourth Generation Design Optimized For  
Manufacturing Test & Test Information.

Designed On Industry Standard Microsoft  
SQL Server For Easy Client IT Integration.

Scaleable, Professional Strength, High  
Performance, Enterprise Databases.

### Anagon Test Databases & Schema Provide Key Enabling Technology For Test Information Architecture.

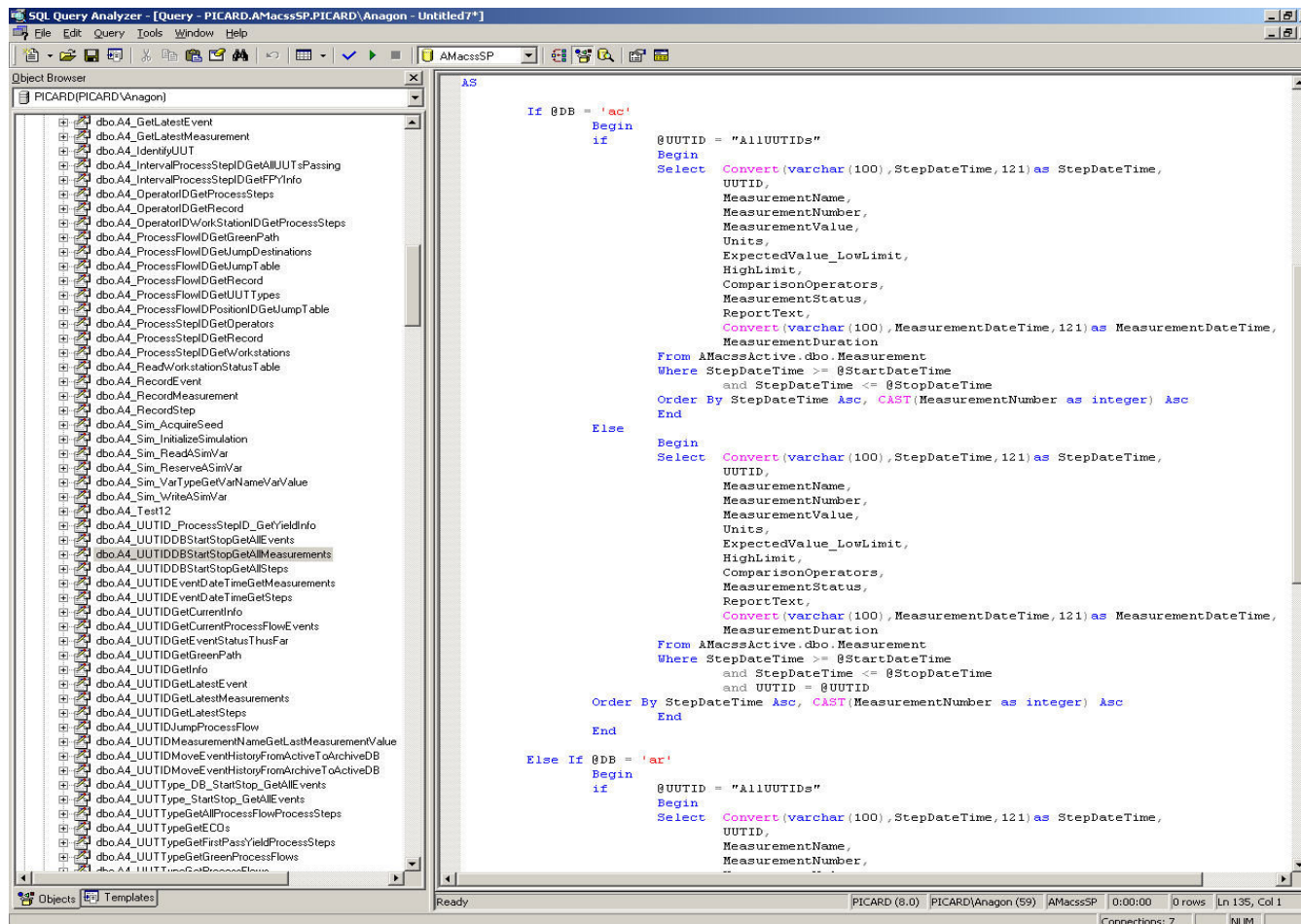


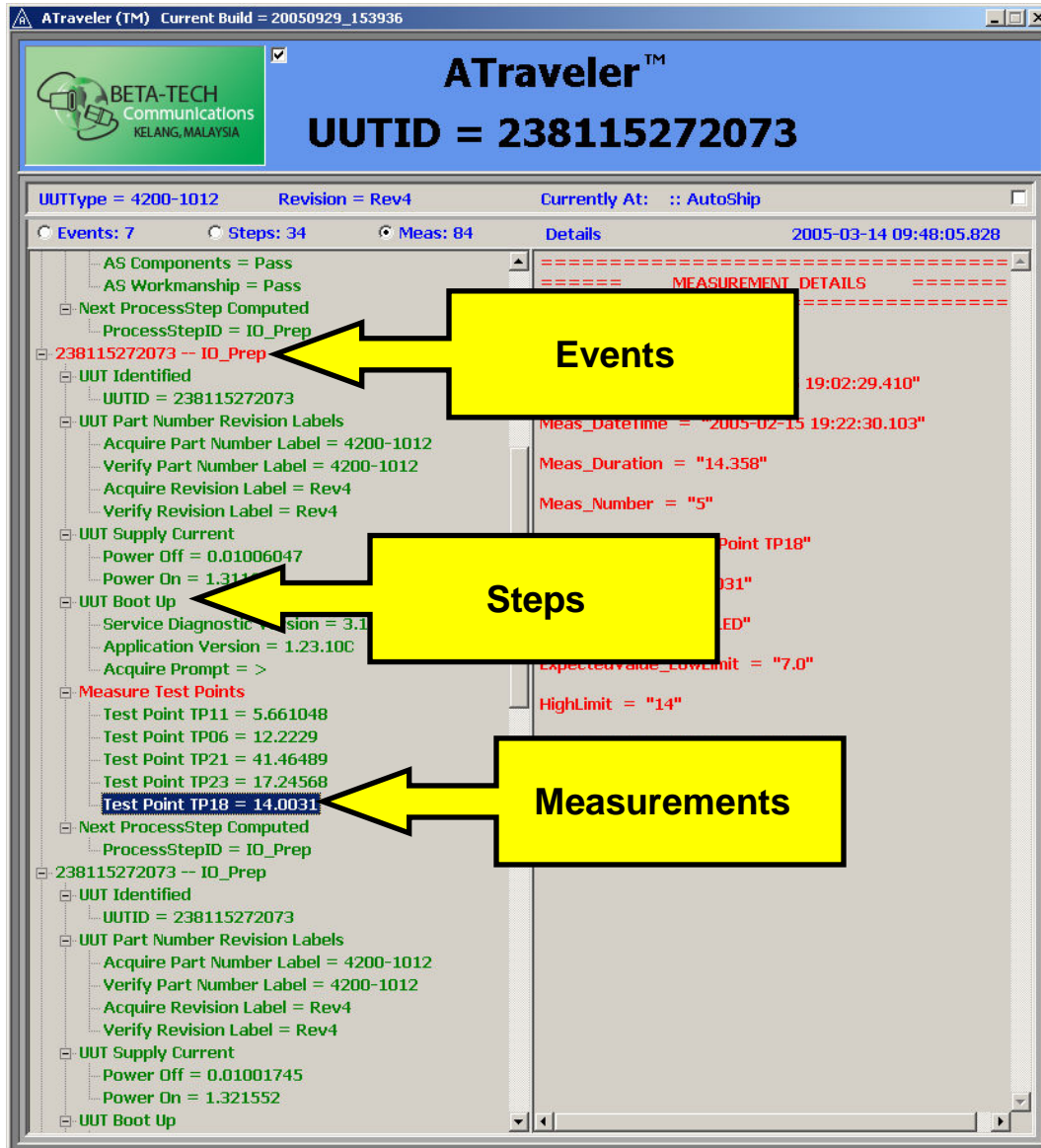
Industrial Strength Microsoft SQL Server  
Security, Password Protection, & Backup.

Extensive Use Of Transact-SQL Stored  
Procedures.

Internet Ready Now; .Net Compatible Into  
The Foreseeable Future!

## Much Anagon Code Is Embodied In Transact-SQL Stored Procedures





**ATraveler™**  
UUTID = 238115272073

UUTType = 4200-1012 Revision = Rev4 Currently At: :: AutoShip

Events: 7 Steps: 34 Meas: 84 Details 2005-03-14 09:48:05.828

**Events**

- AS Components = Pass
- AS Workmanship = Pass
- Next ProcessStep Computed
- ProcessStepID = IO\_Prep
- 238115272073 -- IO\_Prep
- UUT Identified
- UUTID = 238115272073
- UUT Part Number Revision Labels
- Acquire Part Number Label = 4200-1012
- Verify Part Number Label = 4200-1012
- Acquire Revision Label = Rev4
- Verify Revision Label = Rev4
- UUT Supply Current
- Power Off = 0.01006047
- Power On = 1.311
- UUT Boot Up
- Service Diagnostic Version = 3.1
- Application Version = 1.23.10C
- Acquire Prompt = >
- Measure Test Points
- Test Point TP11 = 5.661048
- Test Point TP06 = 12.2229
- Test Point TP21 = 41.46489
- Test Point TP23 = 17.24568
- Test Point TP18 = 14.0031
- Next ProcessStep Computed
- ProcessStepID = IO\_Prep
- 238115272073 -- IO\_Prep
- UUT Identified
- UUTID = 238115272073
- UUT Part Number Revision Labels
- Acquire Part Number Label = 4200-1012
- Verify Part Number Label = 4200-1012
- Acquire Revision Label = Rev4
- Verify Revision Label = Rev4
- UUT Supply Current
- Power Off = 0.01001745
- Power On = 1.321552
- UUT Boot Up

**Steps**

**Measurements**

MEASUREMENT\_DETAILS

Meas\_Datetime = "2005-02-15 19:22:30.103"

Meas\_Duration = "14.358"

Meas\_Number = "5"

Point TP18"

31"

ED"

ExpectedValue\_LowLimit = "7.0"

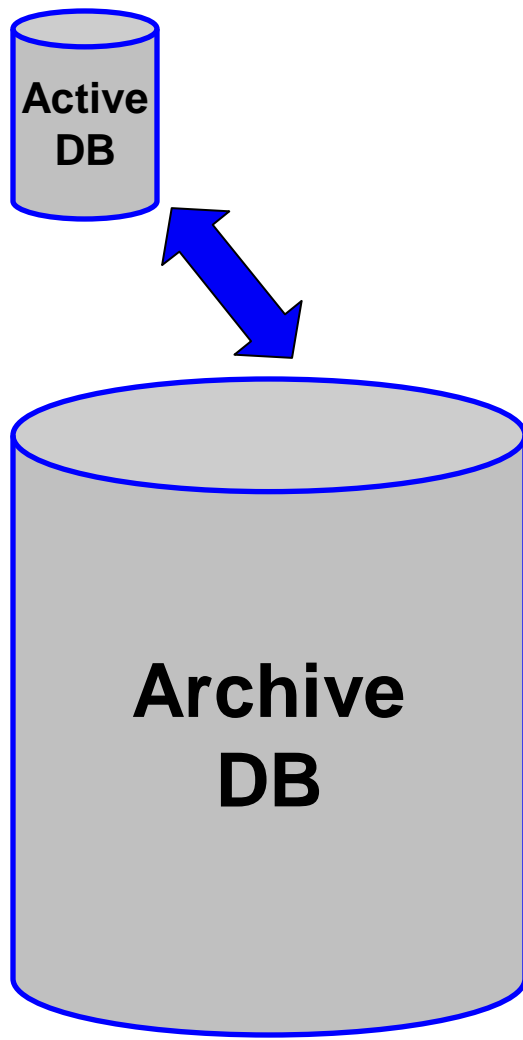
HighLimit = "14"

## Anagon Systems Instantly Organizes Tester Data Into Hierarchical UUT Information.

Events Record What Happens To A Specific UUT During A ProcessStep (Usually Via A Test Sequence.)

Steps Record Major Test Missions (IE: Verifying UUT Boot Up).

Measurements Record Details Of Electronic Tests And Process Actions.



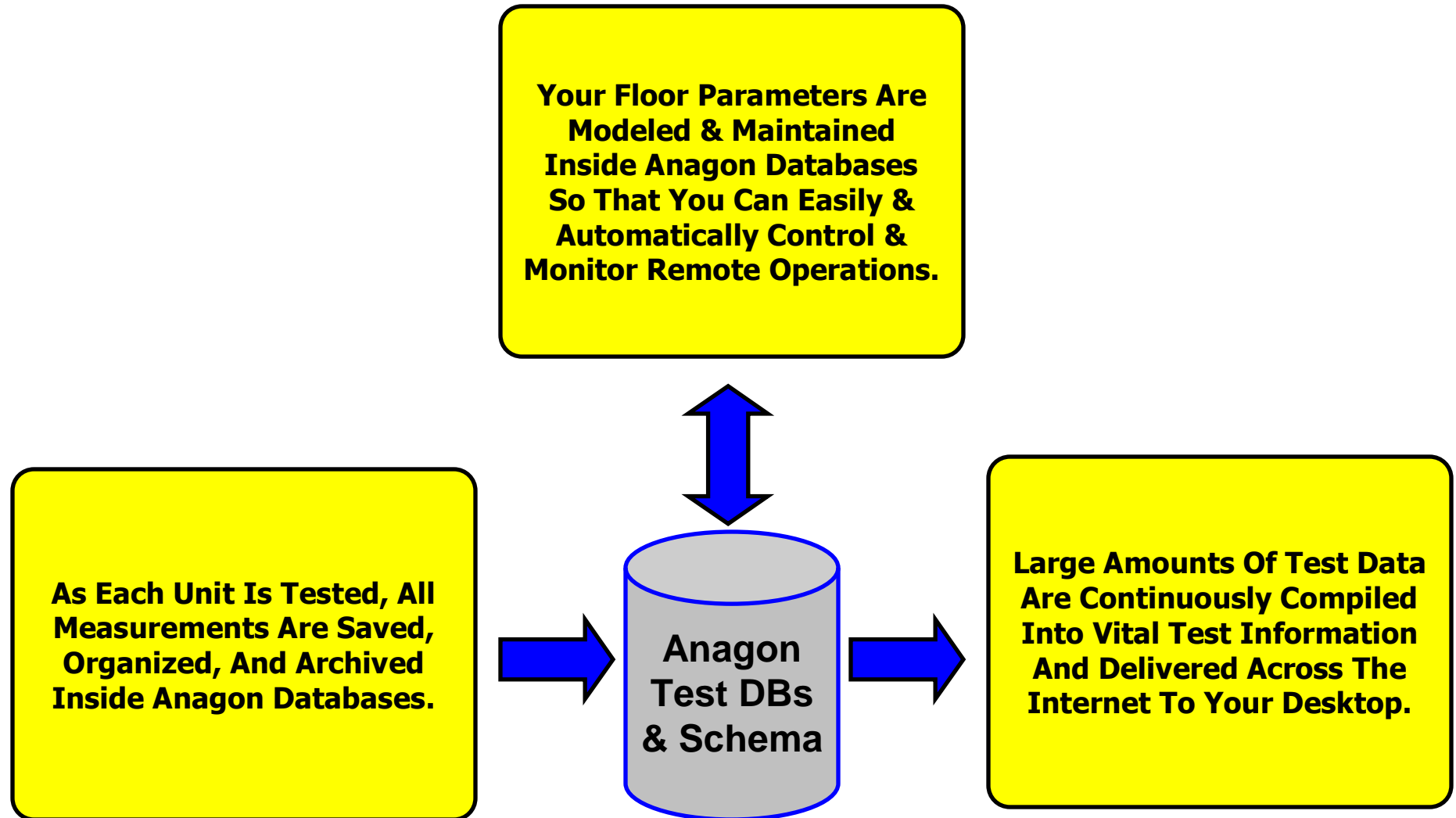
### Anagon's Floor DB Architecture Employs Active And Archive DBs

The Active DB Is Optimized For Size And Performance And Represents Only UUT's That Are On The Floor Right Now.

The Archive DB Monotonically Increases Over The Life Of The Products And Contains Histories Of Every UUT Ever Made.

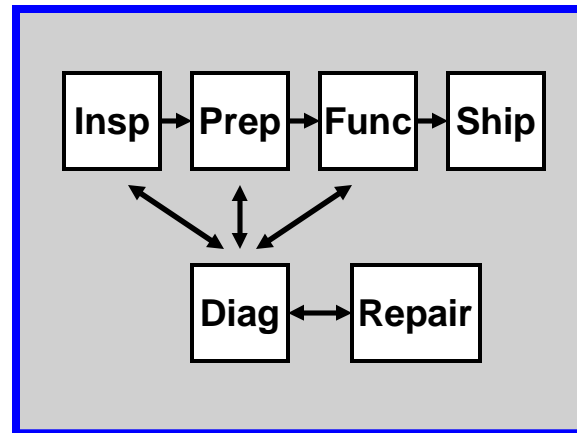
Standard IT Maintenance And Backup Can Be Scheduled Periodically Depending On Policy, Using Industry Standard Tools.





**Strategic Benefits:**  
Measure Your Design  
Reduce Process Variance  
Understand Your Quality  
Control Your CM's  
Impress Your Customers  
Be Information Driven

## Automatic Floor Routing & Control For Each Product



## World Class Automated Test On The Manufacturing Floor

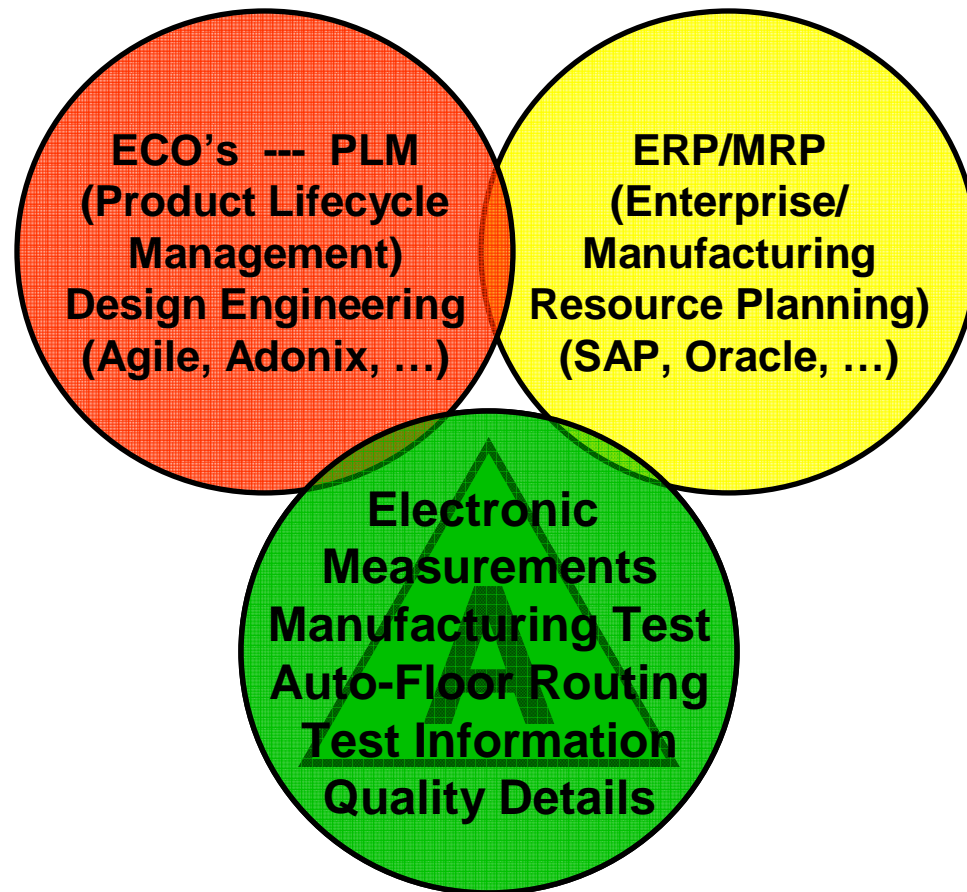


## 24/7 Worldwide Test Information Delivery



**Anagon  
Test DBs  
& Schema**

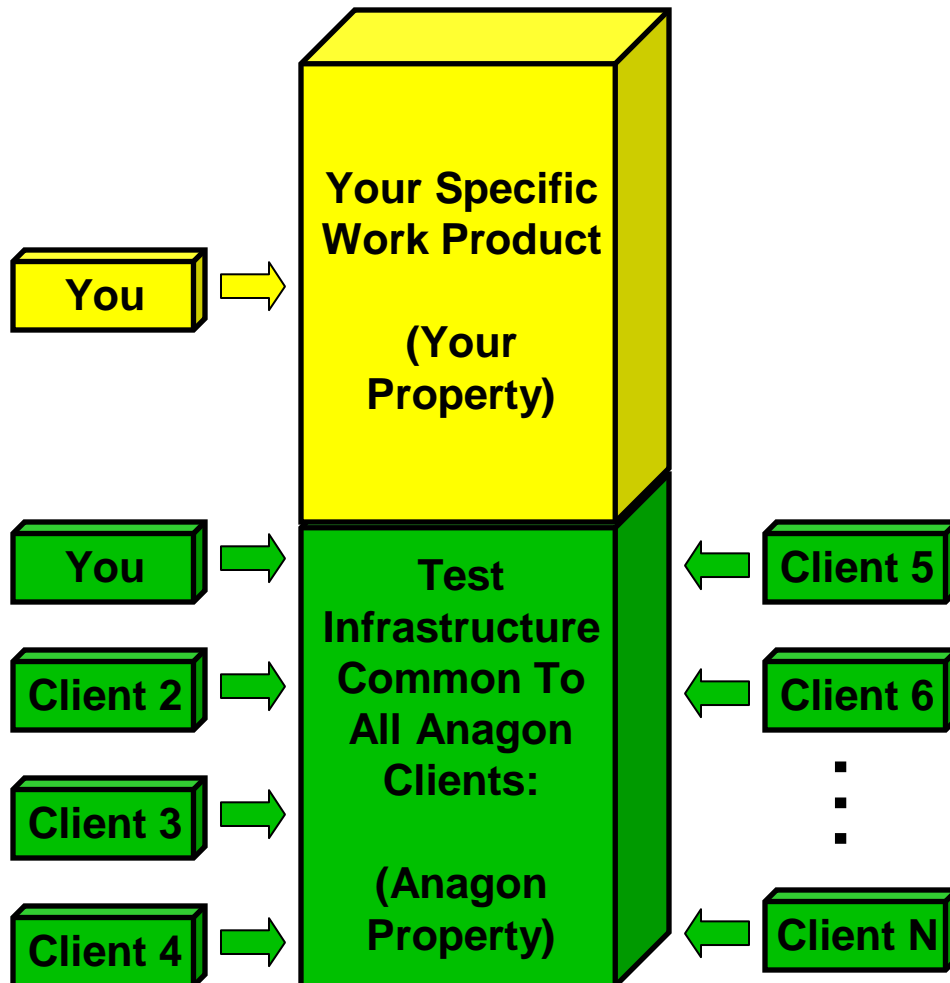
### Anagon Complements Existing PLM And ERP/MRP Systems, Providing Distinct Functionality.



PLM Systems Provide Infrastructure In Engineering To Manage Product Designs And Releases (ECO's).

ERP/MRP Are Planning, Purchasing, Financial, And Ordering Systems. (High Level, Batch Oriented, And Non-Technical.)

Anagon Systems Produce Detailed Electronic Measurements, Measurement Based Floor Routing, And Test Information Delivery.



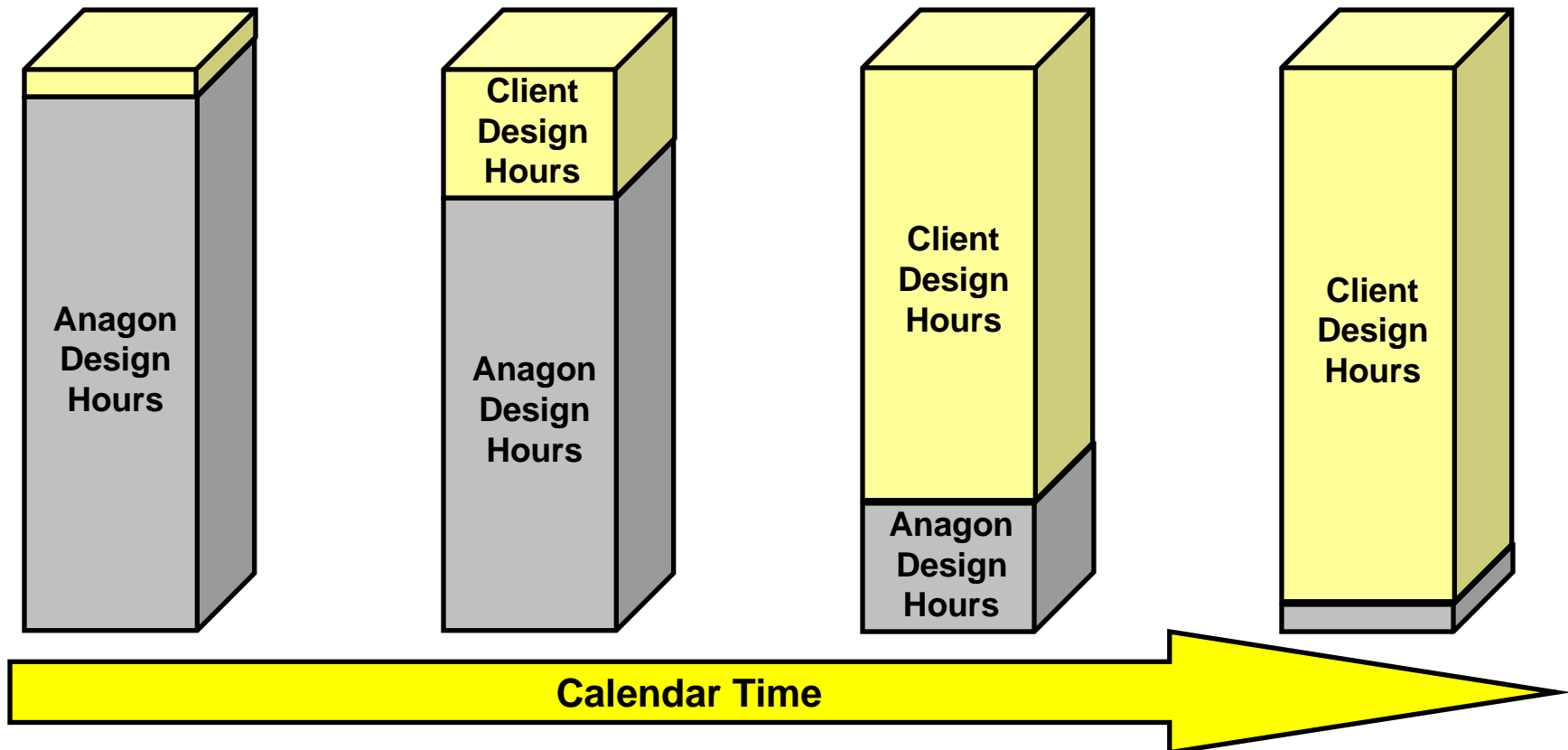
### Full Working Test Solution = Specific Client Work + Common Test Infrastructure.

Client Work Product Is Application Specific  
(Billed On An Hourly Basis):

- Test Station Designs
- Test Program Sequences
- Specific Tests
- Application Specific Databases
- Special Requests Or Applications

Anagon's IP Provides A High Functionality  
Base On Which To Develop Client Specific  
Work Product (Fixed Fee.)

**Client Work Product Is Developed By Anagon And Client Test Engineers.  
Anagon Design Hours Typically Ramp Down Over Calendar Time As Desired.**







## Manufacturing Complex, High Technology, Electronics Products Is Difficult To Do Successfully!

Companies Continually Struggle With Schedules, Quality, and Costs.

Outsourcing To Contract Manufacturers Makes The Struggle More Difficult.

This Battle Is Waged With Little Timely, Accurate, Precise Information.

Often, Companies Don't Have The Best Tools To Get The Job Done Correctly.

Return On Investment For High Quality Manufacturing Tools Is Compelling.





## Our Automated Test Stations Make 100's Of Electronics Measurements On Every Unit Produced

## Anagon's Automated Floor Routing System Ensures That Each Unit Is Tested Thoroughly Before Shipment.

Our Proprietary Test Schema And Test Databases Organize And Save All Measurements On Each Unit.

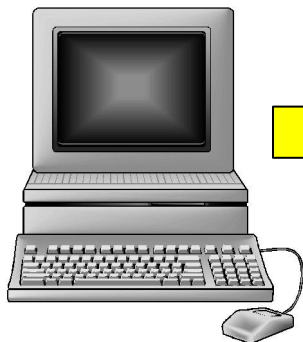
Executive EZ Dashboard™ Delivers Real Time Test Information From Remote Sites Worldwide To The Office Desktop, 24/7.



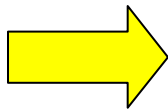


## If It's Anagon, It's Automatic!

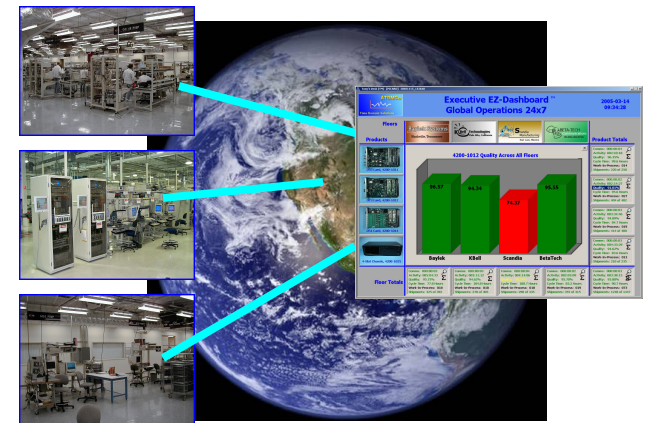
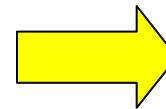
- Anagon Has Deep Technical Knowledge & Broad Manufacturing Experience.
- We Provide State Of The Art Manufacturing Test Services Customized For You.
- It's Not Just About Test! Our Solutions Address Important Strategic Issues.
- Anagon Solutions Will Grow With Your Company In Size & Scope.



Single Station Solution



Multi- Station Solution



Multi-Site, Multi- Station Solution